

Rabbit anti-Human PGI₂Ab (DET)

Catalog No.: RM17940

Basic Information

Catalog No.
RM17940

Category
Elisa Antibody Kit

Application
ELISA

Product Information

Ig Type
Rabbit IgG


Purification
Affinity purification


Endotoxin Level

Storage
This antibody can be stored at 2°C-8°C for one month without detectable loss of activity. Antibody products are stable for twelve months from date of receipt when stored at -20°C to -80°C.
Preservative 0.05% ProClin 300.
Avoid repeated freeze-thaw cycles.

Formulation
Supplied as a 0.2µm filtered solution in PBS with 0.05% ProClin 300, PH 7.4.

Contact

 | order@abclonal.com

 | support@abclonal.com

 | www.abclonal.com

Background

Immunogen Information

Immunogen
Recombinant Human PGI

Cross-Reactivity

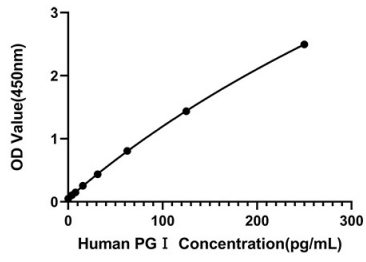
/

Assay Applications

Human PGI Sandwich ELISA Immunoassay

	Recommended Concentration	Sample
ELISA Capture	1-4µg/mL	Rabbit anti-Human PGI (CAP)(Cat. No.RM17939)
ELISA Detection	0.17-0.042µg/mL	Rabbit anti-Human PGI (DET)(Cat. No.RM17940)
Standard	3.91-250pg/mL	Recombinant Human PGI Protein

Validation Data



This standard curve is only for demonstration purposes. A standard curve should be generated for each assay.