

# Rabbit anti-Mouse IL-12/IL-23 p40 mAb (CAP)

**Catalog No.:** RM17947

## Basic Information

**Catalog No.**  
RM17947

**Catagory**  
Elisa Antibody Kit

**Application**  
ELISA

## Product Information

**Ig Type**  
Rabbit IgG

**Purification**  
Affinity purification

**Endotoxin Level**

**Storage**  
Store at -20°C. Avoid freeze / thaw cycles. Preservative 0.05%ProClin 300.  
**Avoid repeated freeze-thaw cycles.**

**Formulation**  
Supplied as a 0.2um filtered solution in PBS with 0.05%ProClin 300,PH 7.4.

## Contact

 | [order@abclonal.com](mailto:order@abclonal.com)  
 | [support@abclonal.com](mailto:support@abclonal.com)  
 | [www.abclonal.com](http://www.abclonal.com)

## Background

This gene encodes the beta subunit p40 of the Interleukin 12 (IL-12) family of cytokines. Members of the IL-12 family form heterodimers consisting of heavy and light subunits linked by disulfide bonds. The product of this gene, p40, is a subunit of interleukins IL-12 and IL-23.

## Immunogen Information

**Immunogen**  
Recombinant Mouse IL-12/IL-23 p40

## Cross-Reactivity

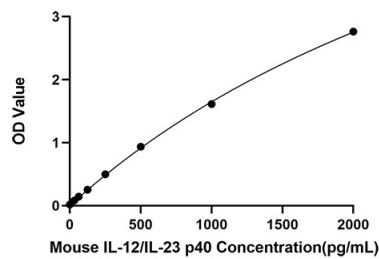
No cross-reactivity in ELISA assay withrecombinant Mouse. G-CSF Mouse.GM-CSF Mouse. IL-1a Mouse.IL-1β Mouse. IL-4 Mouse.IL-5 Mouse.IL-6 Mouse IL-8 Mouse IL-9 Mouse.IL-10 Mouse.IL-12p70 Mouse.TNF-α Mouse.Leptin Mouse.CXCL1/KC Mouse.IL-13,Human IL-12/IL-23 p40,Human IL-12 p70

## Assay Applications

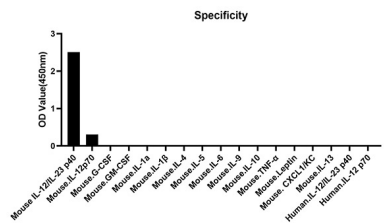
Mouse IL-12/IL-23 p40 Sandwich ELISA Immunoassay

	Recommended Concentration	Sample
ELISA Capture	1-4ug/mL	Rabbit anti-Mouse IL-12/IL-23 p40 mAb(CAP)(Cat. No.RM17947)
ELISA Detection	0.033-0.133ug/mL	Rabbit anti-Mouse IL-12/IL-23 p40 mAb(DET)(Cat. No.RM17948)
Standard	31.25-2000pg/mL	Recombinant Mouse IL-12/IL-23 p40 Protein(Cat. No.RP01696)

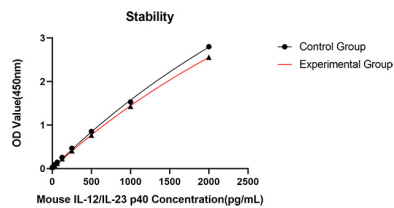
Validation Data



This standard curve is only for demonstration purposes. A standard curve should be generated for each assay.



No significant cross-reactivity or interference was observed.



Placed at 37°C for 3 days, the stability of the standard curve all conform to CV <10%.