

# Rabbit anti-Mouse IL-12/IL-23 p40 mAb (DET)

**Catalog No.:** RM17948

## Basic Information

**Catalog No.**  
RM17948

**Catagory**  
Elisa Antibody Kit

**Application**  
ELISA

## Product Information

**Ig Type**  
Rabbit IgG

**Purification**  
Affinity purification


**Endotoxin Level**


**Storage**  
This antibody can be stored at 2°C-8°C for one month without detectable loss of activity. Antibody products are stable for twelve months from date of receipt when stored at -20°C to -80°C. Preservative-Free.

**Avoid repeated freeze-thaw cycles.**

**Formulation**  
Supplied as a 0.2µm filtered solution in PBS with 0.05% ProClin 300, PH 7.8.

## Contact

 | order@abclonal.com

 | support@abclonal.com

 | www.abclonal.com

## Background

IL-12, also known as natural killer cell stimulatory factor (NKSF) or cytotoxic lymphocyte maturation factor (CLMF), is a pleiotropic cytokine produced primarily by antigen-presenting cells (monocytes/macrophages, dendritic cells and B lymphocytes). IL-12 has multiple effects on T lymphocytes and natural killer (NK) cells, including the ability to stimulate cytotoxicity, proliferation, cytokine production and Th1 subset development. IL-12 is a disulfide-linked, 70 kDa (p70) heterodimeric glycoprotein composed of a unique 35 kDa (p35) subunit and a common 40 kDa (p40) subunit that is also present in IL-23. Monomers of the p40 and p35 subunits by themselves do not have IL-12 activity, but the homodimer of p40 has been shown to bind the IL-12 receptor and is an IL-12 antagonist. The genes for mouse p40 and p35, found on chromosomes 11 and 3, respectively, are independently regulated. The expression of p35 mRNA has been found to be nearly ubiquitous. However, p35 subunits that are not dimerized with the p40 subunits are not secreted and h...

## Immunogen Information

**Immunogen**  
Recombinant Mouse IL-12/IL-23 p40

## Cross-Reactivity

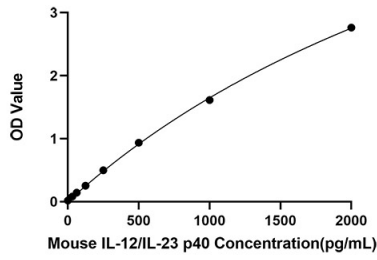
No cross-reactivity in ELISA assay with recombinant Mouse. G-CSF, Mouse GM-CSF, Mouse IL-1α, Mouse IL-1β, Mouse IL-4, Mouse IL-5, Mouse IL-6, Mouse IL-8, Mouse IL-9, Mouse IL-10, Mouse IL-12p70, Mouse TNF-α, Mouse Leptin, Mouse CXCL1/KC, Mouse IL-13, Human IL-12/IL-23 p40, Human IL-12 p70

## Assay Applications

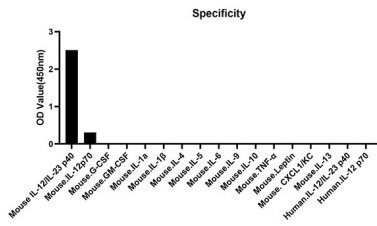
Mouse IL-12/IL-23 p40 Sandwich ELISA Immunoassay

	Recommended Concentration	Sample
ELISA Capture	1-4µg/mL	Rabbit anti-Mouse IL-12/IL-23 p40 mAb(CAP)(Cat. No.RM17947)
ELISA Detection	0.033-0.133µg/mL	Rabbit anti-Mouse IL-12/IL-23 p40 mAb(DET)(Cat. No.RM17948)
Standard	31.25-2000pg/mL	Recombinant Mouse IL-10 Protein

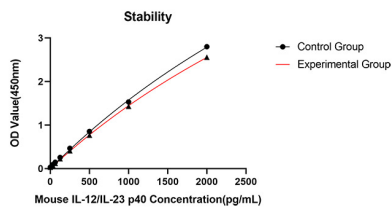
# Validation Data



This standard curve is only for demonstration purposes. A standard curve should be generated for each assay.



No significant cross-reactivity or interference was observed.



Placed at 37°C for 3 days, the stability of the standard curve all conform to CV <10%.