

Rabbit anti-HumanMMP-9 mAb (CAP)

Catalog No.: RM17955

Basic Information

Catalog No.
RM17955

Catagory
Elisa Antibody Kit

Application
ELISA

Product Information

Ig Type
Rabbit IgG

Purification
Affinity purification


Endotoxin Level

Storage
Store at -20°C. Avoid freeze / thaw cycles. Preservative 0.05%ProClin 300.
Avoid repeated freeze-thaw cycles.

Formulation
Supplied as a 0.2um filtered solution in PBS with 0.05%ProClin 300,PH 7.4.

Contact

 | order@abclonal.com

 | support@abclonal.com

 | www.abclonal.com

Background

Proteins of the matrix metalloproteinase (MMP) family are involved in the breakdown of extracellular matrix in normal physiological processes, such as embryonic development, reproduction, and tissue remodeling, as well as in disease processes, such as arthritis and metastasis. Most MMP's are secreted as inactive proproteins which are activated when cleaved by extracellular proteinases. The enzyme encoded by this gene degrades type IV and V collagens. Studies in rhesus monkeys suggest that the enzyme is involved in IL-8-induced mobilization of hematopoietic progenitor cells from bone marrow, and murine studies suggest a role in tumor-associated tissue remodeling.

Immunogen Information

Immunogen
Recombinant Human MMP-9

Cross-Reactivity

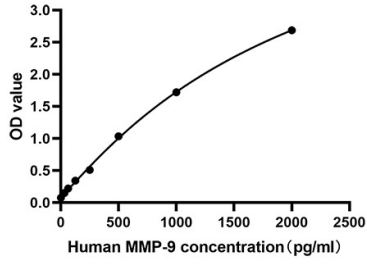
No cross-reactivity in ELISA assay withrecombinant Human NGAL/Lipocalin-2 □Human MMP-2 □Human MMP-3□Human MMP-4

Assay Applications

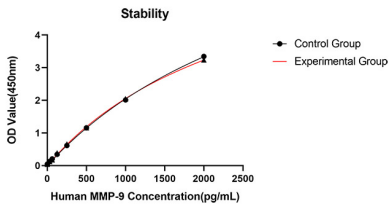
Human MMP-9 Sandwich ELISA Immunoassay

	Recommended Concentration	Sample
ELISA Capture	1-4ug/mL	Rabbit anti-Human MMP-9 (CAP)(Cat. No.RM17955)
ELISA Detection	0.12-0.5ug/mL	Rabbit anti-Human MMP-9 (DET)(Cat. No.RM17956)
Standard	31.25-2000pg/mL	RecombinantHuman MMP-9

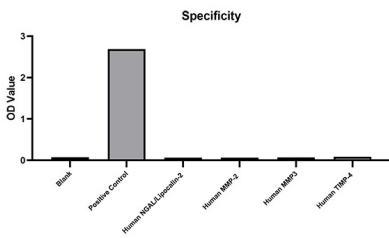
Validation Data



This standard curve is only for demonstration purposes. A standard curve should be generated for each assay.



No significant cross-reactivity or interference was observed.



Placed at 37°C for 3 days, the stability of the standard curve all conform to CV <10%.