

Rabbit anti-Human MMP-9 mAb (DET)

Catalog No.: RM17956

Basic Information

Catalog No.
RM17956

Catagory
Elisa Antibody Kit

Application
ELISA

Product Information

Ig Type
Rabbit IgG

Purification
Affinity purification

Endotoxin Level

Storage
This antibody can be stored at 2°C-8°C for one month without detectable loss of activity. Antibody products are stable for twelve months from date of receipt when stored at -20°C to -80°C.
Preservative 0.05% ProClin 300.

Avoid repeated freeze-thaw cycles.

Formulation
Supplied as a 0.2µm filtered solution in PBS with 0.05% ProClin 300, PH 7.4.

Contact

 | order@abclonal.com

 | support@abclonal.com

 | www.abclonal.com

Background

Matrix metalloproteinase that plays an essential role in local proteolysis of the extracellular matrix and in leukocyte migration (PubMed:2551898, PubMed:1480034, PubMed:12879005). Could play a role in bone osteoclastic resorption (By similarity). Cleaves KISS1 at a Gly-Leu bond (PubMed:12879005). Cleaves NINJ1 to generate the Secreted ninjurin-1 form (PubMed:32883094). Cleaves type IV and type V collagen into large C-terminal three quarter fragments and shorter N-terminal one quarter fragments (PubMed:1480034). Degrades fibronectin but not laminin or Pz-peptide

Immunogen Information

Immunogen
Recombinant Human MMP-9

Cross-Reactivity

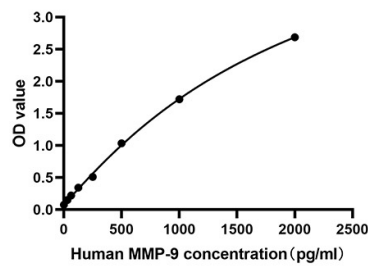
No cross-reactivity in ELISA assay with recombinant Human NGAL/Lipocalin-2 Human MMP-2 Human MMP-3 Human MMP-4

Assay Applications

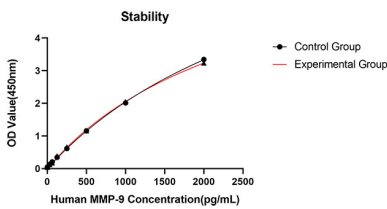
Human MMP-9 Sandwich ELISA Immunoassay

	Recommended Concentration	Sample
ELISA Capture	1-4µg/mL	Rabbit anti-Human MMP-9 (CAP)(Cat. No.RM17955)
ELISA Detection	0.12-0.5µg/mL	Rabbit anti-Human MMP-9 (DET)(Cat. No.RM17956)
Standard	31.25-2000pg/mL	Recombinant Human MMP-9

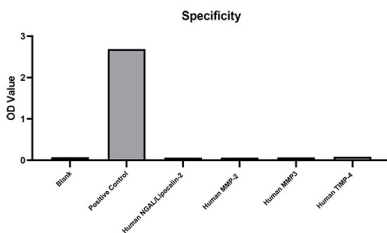
Validation Data



This standard curve is only for demonstration purposes. A standard curve should be generated for each assay.



No significant cross-reactivity or interference was observed.



Placed at 37°C for 3 days, the stability of the standard curve all conform to CV <10%.