

# Rabbit anti-Rat IL-4 mAb(CAP)

**Catalog No.: RM18025**

## Basic Information

**Catalog No.**  
RM18025

**Catagory**  
Elisa Antibody Kit

**Application**  
ELISA

## Product Information

**Ig Type**  
Rabbit IgG


**Purification**  
Affinity purification


**Endotoxin Level**

**Storage**  
This antibody can be stored at 2°C-8°C for one month without detectable loss of activity. Antibody products are stable for twelve months from date of receipt when stored at -20°C to -80°C.  
Preservative □ 0.05% ProClin 300.  
**Avoid repeated freeze-thaw cycles.**

**Formulation**  
Supplied as a 0.2 µm filtered solution in PBS with 0.05% ProClin 300, pH 7.4 containing Mouse IL-6 Antibody.

## Contact

 | [order@abclonal.com](mailto:order@abclonal.com)

 | [support@abclonal.com](mailto:support@abclonal.com)

 | [www.abclonal.com](http://www.abclonal.com)

## Background

Receptor for both interleukin 4 and interleukin 13. Couples to the JAK1/2/3-STAT6 pathway. The IL4 response is involved in promoting Th2 differentiation. The IL4/IL13 responses are involved in regulating IgE production and, chemokine and mucus production at sites of allergic inflammation. In certain cell types, can signal through activation of insulin receptor substrates, IRS1/IRS2 (By similarity)

## Immunogen Information

**Immunogen**  
Recombinant Rat IL-4

## Cross-Reactivity

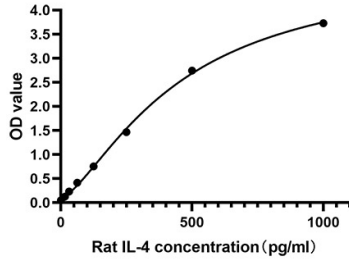
No cross-reactivity in ELISA assay with recombinant  
Rat GM-CSF □ Rat IL-1 beta □ Rat IL-1 alpha □ Rat IL-2 □ Rat IL-6 □ Rat IL-10 □ Mouse IL-4

## Assay Applications

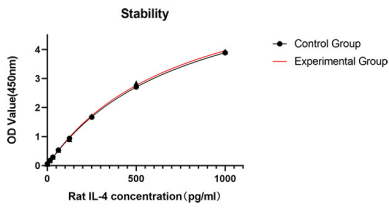
Rat IL-4 Sandwich ELISA Immunoassay

	Recommended Concentration	Sample
ELISA Capture	1-4 µg/mL	Rabbit anti-Rat IL-4(CAP)(Cat. No. RM18025)
ELISA Detection	0.025-0.1 µg/mL	Rabbit anti-Rat IL-4 (DET)(Cat. No. RM18026)
Standard	15.62-1000 pg/mL	Recombinant Rat IL-4

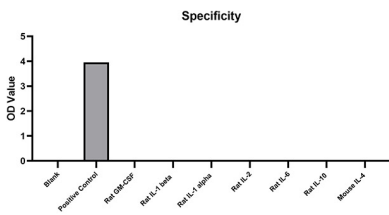
# Validation Data



This standard curve is only for demonstration purposes. A standard curve should be generated for each assay.



No significant cross-reactivity or interference was observed.



Placed at 37°C for 3 days, the stability of the standard curve all conform to CV <10%.