

Rabbit anti-Rat IL-4 mAb

Catalog No.: RM18026

Basic Information

Catalog No.
RM18026

Category
Elisa Antibody Kit

Application
ELISA, Multiplex

Product Information

Ig Type
Rabbit IgG


Purification
Affinity purification

Endotoxin Level

Storage
Store at -20°C.
Avoid repeated freeze-thaw cycles.

Formulation
Supplied as a 0.2µmfiltered solution in PBS with 0.05% ProClin 300, pH 7.4 containing Mouse IL-6 Antibody.

Contact

 | order@abclonal.com

 | support@abclonal.com

 | www.abclonal.com

Background

Receptor for both interleukin 4 and interleukin 13. Couples to the JAK1/2/3-STAT6 pathway. The IL4 response is involved in promoting Th2 differentiation. The IL4/IL13 responses are involved in regulating IgE production and, chemokine and mucus production at sites of allergic inflammation. In certain cell types, can signal through activation of insulin receptor substrates, IRS1/IRS2 (By similarity)

Immunogen Information

Immunogen
Recombinant Rat IL-4 Protein

Cross-Reactivity

No cross-reactivity in ELISA with recombinant Rat GM-CSF □ Rat IL-1 beta □ Rat IL-1 alpha □ Rat IL-2 □ Rat IL-6 □ Rat IL-10 □ Mouse IL-4

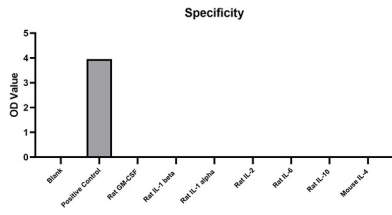
Assay Applications

Rat IL-4 Sandwich ELISA/Multiplex

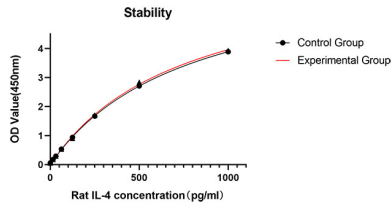
| | | Recommended Concentration | Sample |
|-------|-----------|---------------------------|---|
| ELISA | Capture | 1-4µg/mL | Rabbit anti-Rat IL-4 mAb (Cat. No. RM18025) |
| | Detection | 0.025-0.1µg/mL | Rabbit anti-Rat IL-4 mAb (Cat. No. RM18026) |
| | Standard | 15.62-1000pg/mL | Recombinant Rat IL-4 Protein |

| | | | |
|-----------|-----------|----------------|---|
| Multiplex | Capture | 3-20ug/mL | Rabbit anti-Rat IL-4 mAb(Cat. No.RM18025) |
| | Detection | 0.017-2ug/mL | Rabbit anti-Rat IL-4 mAb(Cat. No.RM18026) |
| | Standard | 1.40-1000pg/mL | Recombinant Rat IL-4 Protein |

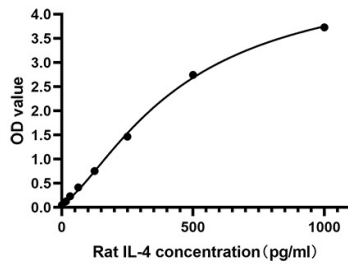
Validation Data



Placed at 37°C for 3 days, the stability of the standard curve all conform to CV <10%.



No significant cross-reactivity or interference was observed.



This standard curve is only for demonstration purposes. A standard curve should be generated for each assay.