

# Rabbit anti-Human RGS9BP mAb (CAP)

**Catalog No.:** RM18029

## Basic Information

**Catalog No.**  
RM18029

**Catagory**  
Elisa Antibody Kit

**Application**  
ELISA

## Product Information

**Ig Type**  
Rabbit IgG


**Purification**  
Affinity purification


**Endotoxin Level**


**Storage**  
Store at -20°C. Avoid freeze / thaw cycles. Preservative 0.05%ProClin 300.  
**Avoid repeated freeze-thaw cycles.**

**Formulation**  
Supplied as a 0.2umfiltered solution in PBS with 0.05%ProClin 300 ,Ph7.4 containing Human NEFL Antibody.

## Contact

 | [order@abclonal.com](mailto:order@abclonal.com)

 | [support@abclonal.com](mailto:support@abclonal.com)

 | [www.abclonal.com](http://www.abclonal.com)

## Background

Inhibits signal transduction by increasing the GTPase activity of G protein alpha subunits thereby driving them into their inactive GDP-bound form. Binds to GNAT1. Involved in phototransduction; key element in the recovery phase of visual transduction (By similarity).

## Immunogen Information

**Immunogen**  
Recombinant Human RGS9BP

## Cross-Reactivity

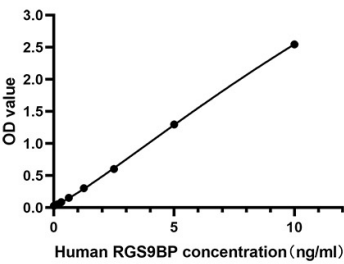
/

## Assay Applications

Human RGS9BP Sandwich ELISA Immunoassay

	Recommended Concentration	Sample
ELISA Capture	1-4ug/mL	Rabbit anti- Human RGS9BP(CAP)(Cat. No.RM18029)
ELISA Detection	0.003-0.012ug/mL	Rabbit anti- Human RGS9BP (DET)(Cat. No.RM18030)
Standard	0.15-10ng/mL	Recombinant Human RGS9BP

# Validation Data



This standard curve is only for demonstration purposes. A standard curve should be generated for each assay.