

Rabbit anti-Human RGS9BP mAb (DET)

Catalog No.: RM18030

Basic Information

Catalog No.
RM18030

Catagory
Elisa Antibody Kit

Application
ELISA

Product Information

Ig Type
Rabbit IgG

Purification
Affinity purification

Endotoxin Level

Storage
Store at -20°C. Avoid freeze / thaw cycles. Preservative 0.05%ProClin 300.
Avoid repeated freeze-thaw cycles.

Formulation
Supplied as a 0.2umfiltered solution in PBS with0.05%ProClin 300 ,Ph7.4 containing Human NEFL Antibody.

Contact

 | order@abclonal.com

 | support@abclonal.com

 | www.abclonal.com

Background

The protein encoded by this gene functions as a regulator of G protein-coupled receptor signaling in phototransduction. Studies in bovine and mouse show that this gene is expressed only in the retina, and is localized in the rod outer segment membranes. This protein is associated with a heterotetrameric complex, specifically interacting with the regulator of G-protein signaling 9, and appears to function as the membrane anchor for the other largely soluble interacting partners. Mutations in this gene are associated with prolonged electroretinal response suppression (PERRS), also known as bradyopsia.

Immunogen Information

Immunogen
Recombinant Human RGS9BP

Cross-Reactivity

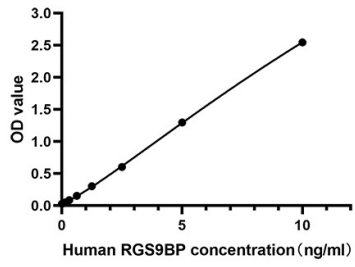
/

Assay Applications

Human RGS9BP Sandwich ELISA Immunoassay

	Recommended Concentration	Sample
ELISA Capture	1-4ug/mL	Rabbit anti- Human RGS9BP(CAP)(Cat. No.RM18029)
ELISA Detection	0.003-0.012ug/mL	Rabbit anti- Human RGS9BP (DET)(Cat. No.RM18030)
Standard	0.15-10ng/mL	Recombinant Human RGS9BP

Validation Data



This standard curve is only for demonstration purposes. A standard curve should be generated for each assay.