

Rabbit anti-Universal Nuclease mAb(DET)

Catalog No.: RM18036

Basic Information

Catalog No.
RM18036

Catagory
Elisa Antibody Kit

Application
ELISA

Product Information

Ig Type
Rabbit IgG


Purification
Affinity purification


Endotoxin Level

Storage
This antibody can be stored at 2°C-8°C for one month without detectable loss of activity. Antibody products are stable for twelve months from date of receipt when stored at -20°C to -80°C.
Preservative 0.05% ProClin 300.
Avoid repeated freeze-thaw cycles.

Formulation
Supplied as a 0.2µm filtered solution in PBS with 0.05% ProClin 300, pH 7.4 containing Human NEFL Antibody.

Contact

 | order@abclonal.com

 | support@abclonal.com

 | www.abclonal.com

Background

Nuclease, also known as unrestricted endonuclease and broad-spectrum nuclease, is a non-specific endonuclease derived from *Serratia Marcescens*, which can completely digest RNA and DNA (doublestranded, single-stranded, linear, circular) and is widely used to remove nucleic acids in biological products. Therefore, there may be trace residue of omnipotent nuclease in biological products, which will have certain influence on biological products.

Immunogen Information

Immunogen
Recombinant Universal Nuclease

Cross-Reactivity

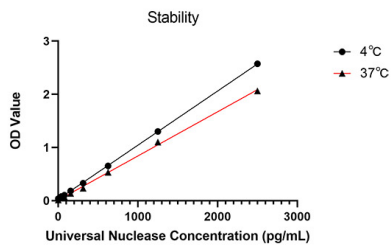
/

Assay Applications

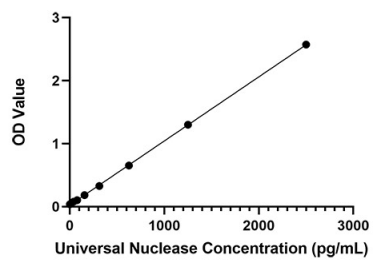
Universal Nuclease Sandwich ELISA Immunoassay

	Recommended Concentration	Sample
ELISA Capture	1-4µg/mL	Rabbit anti-Universal Nuclease mAb(CAP)(Cat. No.RM18035)
ELISA Detection	0.05-0.0125µg/mL	Rabbit anti-Universal Nuclease mAb(DET)(Cat. No.RM18036)
Standard	39.06-2500pg/mL	Recombinant Universal Nuclease(Cat. No.RP01595LQ)

Validation Data



Placed at 37°C for 3 days, the stability of the standard curve all conform to CV <10%.



This standard curve is only for demonstration purposes. A standard curve should be generated for each assay.