

# Rabbit anti-Human B7-1/CD80 mAb(CAP)

**Catalog No.:** RM18039

## Basic Information

**Catalog No.**  
RM18039

**Catagory**  
Elisa Antibody Kit

**Application**  
ELISA

## Product Information

**Ig Type**  
Rabbit IgG

**Purification**  
Affinity purification


**Endotoxin Level**


**Storage**  
This antibody can be stored at 2°C-8°C for one month without detectable loss of activity. Antibody products are stable for twelve months from date of receipt when stored at -20°C to -80°C. Preservative-Free.

**Avoid repeated freeze-thaw cycles.**

**Formulation**  
Supplied as a 0.2µm filtered solution in PBS with 0.1% BSA, pH 7.4 containing Human NEFL Antibody.

## Contact

 | [order@abclonal.com](mailto:order@abclonal.com)

 | [support@abclonal.com](mailto:support@abclonal.com)

 | [www.abclonal.com](http://www.abclonal.com)

## Background

B7-1/CD80 and B7-2/CD86, together with their receptors CD28 and CTLA-4, constitute one of the dominant co-stimulatory pathways that regulate T- and B-cell responses. Although both CTLA-4 and CD28 can bind to the same ligands, CTLA-4 binds to B7-1 and B7-2 with a 20 - 100 fold higher affinity than CD28 and is involved in the down-regulation of the immune response. B7-1 is expressed on activated B cells, activated T cells, and macrophages. B7-2 is constitutively expressed on interdigitating dendritic cells, Langerhans cells, peripheral blood dendritic cells, memory B cells, and germinal center B cells.

## Immunogen Information

**Immunogen**  
Recombinant Human B7-1/CD80

## Cross-Reactivity

/

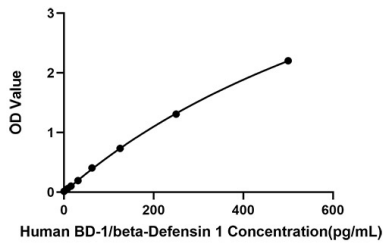
## Assay Applications

Human B7-1/CD80 Sandwich ELISA Immunoassay

	Recommended Concentration	Sample
ELISA Capture	1-4µg/mL	Rabbit anti-Human B7-1 mAb(CAP)(Cat. No.RM18039)
ELISA Detection	0.01-0.04µg/mL	Rabbit anti-Human B7-1 mAb(DET)(Cat. No.RM18040)
Standard	7.81-500pg/mL	Recombinant Human B7-1/CD80 Protein

## Validation Data

---



This standard curve is only for demonstration purposes. A standard curve should be generated for each assay.