

Rabbit anti-Human Hyaluronidase 1/HYAL1 mAb(CAP)

Catalog No.: RMK0007

Basic Information

Catalog No.
RMK0007

Catagory
Elisa Antibody Kit

Application
ELISA

Product Information

Ig Type
Rabbit IgG

Purification
Affinity purification

Endotoxin Level

Storage
Store at -20°C. Avoid freeze / thaw cycles. Preservative 0.05%ProClin 300.
Avoid repeated freeze-thaw cycles.

Formulation
Supplied as a 0.2um filtered solution in PBS with 0.05%ProClin 300,PH 7.4.

Contact

 | order@abclonal.com

 | support@abclonal.com

 | www.abclonal.com

Background

Troponin I (TnI), along with troponin T (TnT) and troponin C (TnC), is one of 3 subunits that form the troponin complex of the thin filaments of striated muscle. TnI is the inhibitory subunit; blocking actin-myosin interactions and thereby mediating striated muscle relaxation. The TnI subfamily contains three genes: TnI-skeletal-fast-twitch, TnI-skeletal-slow-twitch, and TnI-cardiac. This gene encodes the TnI-cardiac protein and is exclusively expressed in cardiac muscle tissues. Mutations in this gene cause familial hypertrophic cardiomyopathy type 7 (CMH7) and familial restrictive cardiomyopathy (RCM). Troponin I is useful in making a diagnosis of heart failure, and of ischemic heart disease. An elevated level of troponin is also now used as indicator of acute myocardial injury in patients hospitalized with moderate/severe Coronavirus Disease 2019 (COVID-19). Such elevation has also been associated with higher risk of mortality in cardiovascular disease patients hospitalized due to COVID-19.

Immunogen Information

Immunogen
Recombinant Human Hyaluronidase 1/HYAL1

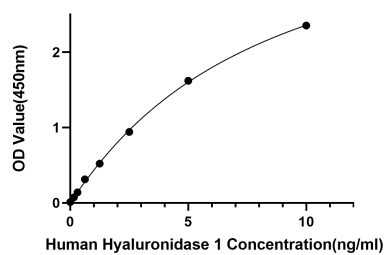
Cross-Reactivity

Assay Applications

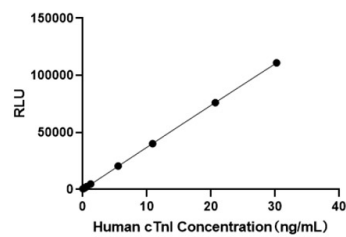
Human Hyaluronidase 1 Sandwich ELISA Immunoassay

	Recommended Concentration	Sample
ELISA Capture	1-4ug/mL	Rabbit anti- Human Hyaluronidase 1(CAP)(Cat. No.RMK0007)
ELISA Detection	0.01-0.0025ug/mL	Rabbit anti- Human Hyaluronidase 1(DET)(Cat. No.RMK0008)
Standard	0.15-10ng/mL	Recombinant Human Hyaluronidase 1

Validation Data



This standard curve is only for demonstration purposes. A standard curve should be generated for each assay.



This standard curve is only for demonstration purposes. A standard curve should be generated for each assay.