

Rabbit anti-Human IgG(Total) mAb(CAP)

Catalog No.: RMK0009

Basic Information

Catalog No.
RMK0009

Catagory
Elisa Antibody Kit

Application
ELISA

Product Information

Ig Type
Rabbit IgG


Purification
Affinity purification


Endotoxin Level

Storage
Store at -20°C. Avoid freeze / thaw cycles. Preservative 0.05%ProClin 300.
Avoid repeated freeze-thaw cycles.

Formulation
Supplied as a 0.2um filtered solution in PBS with 0.05%ProClin 300,PH 7.4.

Contact

 | order@abclonal.com

 | support@abclonal.com

 | www.abclonal.com

Background

Predicted to enable antigen binding activity and immunoglobulin receptor binding activity. Predicted to be involved in several processes, including activation of immune response; defense response to other organism; and phagocytosis. Predicted to act upstream of or within several processes, including immunoglobulin mediated immune response; positive regulation of hypersensitivity; and positive regulation of phagocytosis. Located in extracellular space.

Immunogen Information

Immunogen
Recombinant Human IgG Fc region

Cross-Reactivity

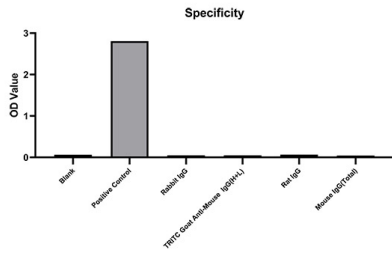
No cross-reactivity in ELISA assay with recombinant Rabbit IgG, TRITC Goat Anti-Mouse IgG(H+L), Rat IgG, Mouse IgG(Total)

Assay Applications

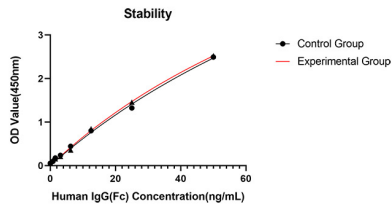
Human IgG Sandwich ELISA Immunoassay

	Recommended Concentration	Sample
ELISA Capture	0.5-2ug/mL	Rabbit anti-Human IgG(Total) mAb(CAP)(Cat. No.RMK0009)
ELISA Detection	0.01-0.0025ug/mL	Rabbit anti-Human IgG(Total) mAb (DET)(Cat. No.RMK0010)
Standard	0.78-50ng/mL	Native Human IgG

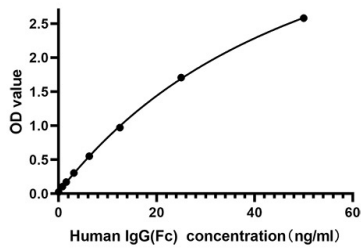
Validation Data



No significant cross-reactivity or interference was observed.



Placed at 37°C for 3 days, the stability of the standard curve all conform to CV <10%.



This standard curve is only for demonstration purposes. A standard curve should be generated for each assay.