

Rabbit anti-Human IgG(Total) mAb(DET)

Catalog No.: RMK0010

Basic Information

Catalog No.
RMK0010

Catagory
Elisa Antibody Kit

Application
ELISA

Product Information

Ig Type
Rabbit IgG

Purification
Affinity purification

Endotoxin Level

Storage
This antibody can be stored at 2°C-8°C for one month without detectable loss of activity. Antibody products are stable for twelve months from date of receipt when stored at -20°C to -84°C.
Preservative □ 0.05% ProClin 300.
Avoid repeated freeze-thaw cycles.

Formulation
Supplied as a 0.2um filtered solution in PBS with 0.05% ProClin 300, PH 7.4.

Contact

order@abclonal.com
support@abclonal.com
www.abclonal.com

Background

Cell surface receptor that transfers passive humoral immunity from the mother to the newborn. Binds to the Fc region of monomeric immunoglobulin gamma and mediates its selective uptake from milk (PubMed:7964511, PubMed:10933786). IgG in the milk is bound at the apical surface of the intestinal epithelium. The resultant FcRn-IgG complexes are transcytosed across the intestinal epithelium and IgG is released from FcRn into blood or tissue fluids. Throughout life, contributes to effective humoral immunity by recycling IgG and extending its half-life in the circulation. Mechanistically, monomeric IgG binding to FcRn in acidic endosomes of endothelial and hematopoietic cells recycles IgG to the cell surface where it is released into the circulation (PubMed:10998088). In addition of IgG, regulates homeostasis of the other most abundant circulating protein albumin/ALB (PubMed:24469444, PubMed:28330995). By Similarity5 Publications (Microbial infection) Acts as an uncoating receptor for a panel of echoviruses including Echovirus 5, 6, 7, 9, 11, 1...

Immugen Information

Immugen
Recombinant Human IgG Fc region

Cross-Reactivity

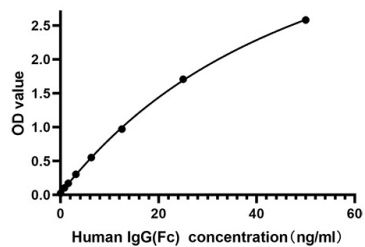
No cross-reactivity in ELISA assay with recombinant Rabbit IgG □ TRITC Goat Anti-Mouse IgG(H+L) □ Rat IgG □ Mouse IgG(Total)

Assay Applications

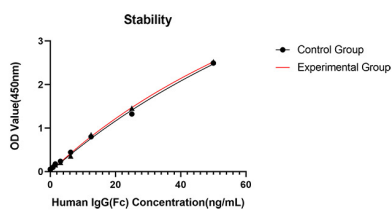
Human IgG Sandwich ELISA Immunoassay

	Recommended Concentration	Sample
ELISA Capture	0.5-2ug/mL	Rabbit anti-Human IgG(Total) mAb(CAP)(Cat. No.RMK0009)
ELISA Detection	0.01-0.0025ug/mL	Rabbit anti-Human IgG(Total) mAb (DET)(Cat. No.RMK0010)
Standard	0.78-50ng/mL	Native Human IgG

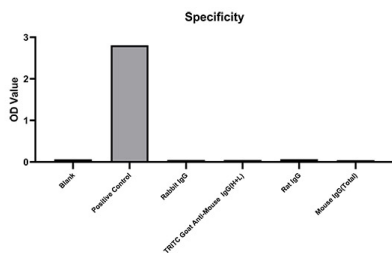
Validation Data



This standard curve is only for demonstration purposes. A standard curve should be generated for each assay.



Placed at 37°C for 3 days, the stability of the standard curve all conform to CV <10%.



No significant cross-reactivity or interference was observed.