

# Rabbit anti-Mouse IL-1 beta mAb

**Catalog No.:** RMK0018

## Basic Information

**Catalog No.**  
RMK0018

**Catagory**  
Elisa Antibody Kit

**Application**  
ELISA

## Product Information

**Ig Type**  
Rabbit IgG

**Purification**  
Affinity purification

**Endotoxin Level**

**Storage**  
Store at -20°C.  
**Avoid repeated freeze-thaw cycles.**

**Formulation**  
Supplied as a 0.2 µm filtered solution in PBS with 0.05% Proclin 300, pH 7.4.

## Contact

 | [order@abclonal.com](mailto:order@abclonal.com)

 | [support@abclonal.com](mailto:support@abclonal.com)

 | [www.abclonal.com](http://www.abclonal.com)

## Background

The protein encoded by this gene is a member of the interleukin 1 cytokine family. This cytokine is produced by activated macrophages as a proprotein, which is proteolytically processed to its active form by caspase 1. The encoded protein plays a role in thymocyte proliferation and is involved in the inflammatory response.

## Immunogen Information

**Immunogen**  
Recombinant mouse IL-1 beta Protein

## Cross-Reactivity

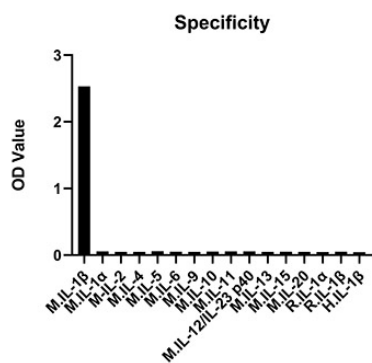
No cross-reactivity in immunoassay with recombinant Mouse IL-1β, Mouse IL-1α, Mouse IL-2, Mouse IL-4, Mouse IL-5, Mouse IL-6, Mouse IL-9, Mouse IL-10, Mouse IL-11, Mouse IL-12/IL-23 p40, Mouse IL-13, Mouse IL-15, Mouse IL-20, Rat IL-1α, Rat IL-1β, Rat IL-1β

## Assay Applications

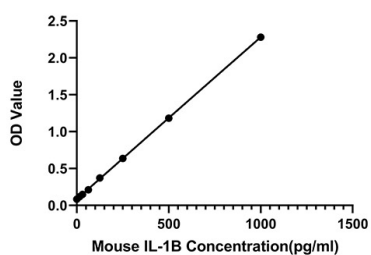
Mouse IL-1 beta Sandwich Immunoassay

		Recommended Concentration	Sample
ELISA	Capture	1-4 µg/mL	Rabbit anti-Mouse IL-1 beta mAb (Cat. No. RMK0017)
	Detection	0.125-0.5 µg/mL	Rabbit anti-Mouse IL-1 beta mAb (Cat. No. RMK0018)
	Standard	15.63-1000 pg/mL	Recombinant Mouse IL-1 beta Protein

## Validation Data



No significant cross-reactivity or interference was observed.



This standard curve is only for demonstration purposes. A standard curve should be generated for each assay.