

Rabbit anti-Human Tau mAb

Catalog No.: RMK0025

Basic Information

Catalog No.
RMK0025

Catagory
Elisa Antibody Kit

Application
CLIA assay □ ELISA assay

Product Information

Ig Type
Rabbit IgG


Purification
Affinity purification


Endotoxin Level

Storage
Store at -20°C. Avoid freeze / thaw cycles. Preservative □ 0.05% ProClin 300.
Avoid repeated freeze-thaw cycles.

Formulation
Supplied as a 0.2um filtered solution in PBS with 0.1% Bredas MB-1, PH 7.4.

Contact

 | order@abclonal.com

 | support@abclonal.com

 | www.abclonal.com

Background

This gene encodes the microtubule-associated protein tau (MAPT) whose transcript undergoes complex, regulated alternative splicing, giving rise to several mRNA species. MAPT transcripts are differentially expressed in the nervous system, depending on stage of neuronal maturation and neuron type. MAPT gene mutations have been associated with several neurodegenerative disorders such as Alzheimer's disease, Pick's disease, frontotemporal dementia, cortico-basal degeneration and progressive supranuclear palsy.

Immunogen Information

Immunogen
Recombinant Human Tau Protein

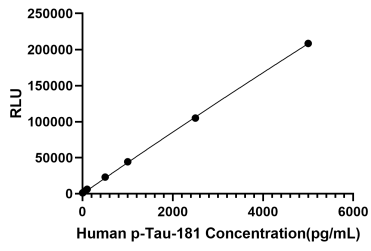
Cross-Reactivity

Assay Applications

Human p-Tau181 CLIA assay

	Recommended Concentration	Sample
CLIA Capture	1-4ug/mL	Rabbit anti-Human Tau mAb(Cat. No.RMK0025)
CLIA Detection	0.5-2ug/mL	Rabbit anti-Human p-Tau181 mAb(Cat. No.RMK0110)
Standard	0.05-5ng/mL	Recombinant Human p-Tau181 Protein

Validation Data



This standard curve is only for demonstration purposes. A standard curve should be generated for each assay.