

# Rabbit anti-Human cTnI mAb(DET)

**Catalog No.:** RMK0029

## Basic Information

**Catalog No.**  
RMK0029

**Catagory**  
Elisa Antibody Kit

**Application**  
Multiplex,CLIA

## Product Information

**Ig Type**  
Rabbit IgG

**Purification**  
Affinity purification

**Endotoxin Level**  
N/A

**Storage**  
Store at -20°C.  
**Avoid repeated freeze-thaw cycles.**

**Formulation**  
Supplied as a 0.2 µm filtered solution in PBS with 0.05% Proclin 300, pH 7.3.

## Contact

 | order@abclonal.com

 | support@abclonal.com

 | www.abclonal.com

## Background

Troponin I (TnI), along with troponin T (TnT) and troponin C (TnC), is one of 3 subunits that form the troponin complex of the thin filaments of striated muscle. TnI is the inhibitory subunit; blocking actin-myosin interactions and thereby mediating striated muscle relaxation. The TnI subfamily contains three genes: TnI-skeletal-fast-twitch, TnI-skeletal-slow-twitch, and TnI-cardiac. This gene encodes the TnI-cardiac protein and is exclusively expressed in cardiac muscle tissues. Mutations in this gene cause familial hypertrophic cardiomyopathy type 7 (CMH7) and familial restrictive cardiomyopathy (RCM). Troponin I is useful in making a diagnosis of heart failure, and of ischemic heart disease. An elevated level of troponin is also now used as indicator of acute myocardial injury in patients hospitalized with moderate/severe Coronavirus Disease 2019 (COVID-19). Such elevation has also been associated with higher risk of mortality in cardiovascular disease patients hospitalized due to COVID-19.

## Immunogen Information

**Immunogen**  
Synthetic peptide corresponding to human cTnI

## Cross-Reactivity

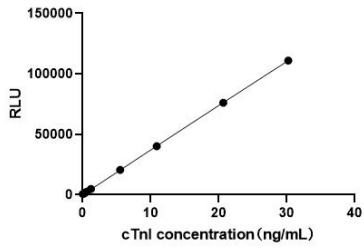
## Assay Applications

Human cTnI Sandwich Immunoassay

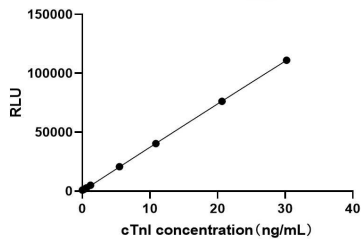
	Recommended Concentration	Sample
CLIA Capture	1-4ug/mL	Rabbit anti-Human cTnI mAb(CAP)(Cat. No.RMK0028)
CLIA Detection	0.5-2ug/mL	Rabbit anti-Human cTnI mAb(DET)(Cat. No.RMK0029)
Standard	0.22-30ng/mL	Recombinant Human cTnI Protein

## Validation Data

---



This standard curve is only for demonstration purposes. A standard curve should be generated for each assay.



This standard curve is only for demonstration purposes. A standard curve should be generated for each assay.