

Rabbit anti-Human IFN-gamma mAb (DET)

Catalog No.: RMK0038

Basic Information

Catalog No.
RMK0038

Catagory
Elisa Antibody Kit

Application
ELISA,CLIA

Product Information

Ig Type
Rabbit IgG

Purification
Affinity purification

Endotoxin Level

Storage
Store at -20°C.
Avoid repeated freeze-thaw cycles.

Formulation
Supplied as a 0.2µm filtered solution in PBS with 0.05% Proclin300, PH 7.4

Contact

		order@abclonal.com
		support@abclonal.com
		www.abclonal.com

Background

This gene encodes a soluble cytokine that is a member of the type II interferon class. The encoded protein is secreted by cells of both the innate and adaptive immune systems. The active protein is a homodimer that binds to the interferon gamma receptor which triggers a cellular response to viral and microbial infections. Mutations in this gene are associated with an increased susceptibility to viral, bacterial and parasitic infections and to several autoimmune diseases.

Immunogen Information

Immunogen
Recombinant fusion protein containing a sequence corresponding to amino acids 24-166 of human IFN-gamma (NP_000610.2).

Cross-Reactivity

/

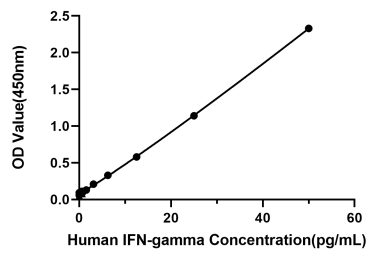
Assay Applications

Human IFN-gamma Sanwich Immunoassay

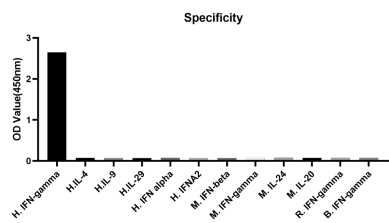
		Recommended Concentration	Sample
ELISA	Capture	1-4ug/mL	Rabbit anti-Human IFN-gamma mAb (Cat. No. RMK0037)
	Detection	0.125-0.5ug/mL	Rabbit anti-Human IFN-gamma mAb (Cat. No. RMK0038)
	Standard	0.78-50pg/mL	Recombinant Human IFN-gamma Protein

CLIA	Capture	1-4ug/mL	Rabbit anti-Human IFN-gamma mAb (Cat. No. RMK0037)
	Detection	0.5-2ug/mL	Rabbit anti-Human IFN-gamma mAb (Cat. No. RMK0038)
	Standard	5-2000pg/mL	Recombinant Human IFN-gamma Protein

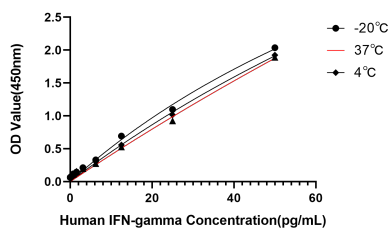
Validation Data



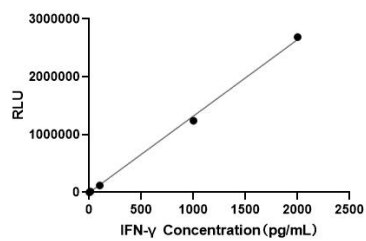
This standard curve is only for demonstration purposes. A standard curve should be generated for each assay.



No significant cross-reactivity or interference was observed.



Placed at 37°C for 3 days, the stability of the standard curve all conform to CV <10%.



This standard curve is only for demonstration purposes. A standard curve should be generated for each assay.