

Rabbit anti-Human IFN-gamma mAb

Catalog No.: RMK0040

Basic Information

Catalog No.
RMK0040

Catagory
Elisa Antibody Kit

Application
ELISA

Product Information

Ig Type
Rabbit IgG

Purification
Affinity purification

Endotoxin Level

Storage
Store at -20°C.
Avoid repeated freeze-thaw cycles.

Formulation
Supplied as a 0.2 µm filtered solution in PBS with 0.05% Proclin 300, pH 7.4.

Contact

		order@abclonal.com
		support@abclonal.com
		www.abclonal.com

Background

This gene encodes a soluble cytokine that is a member of the type II interferon class. The encoded protein is secreted by cells of both the innate and adaptive immune systems. The active protein is a homodimer that binds to the interferon gamma receptor which triggers a cellular response to viral and microbial infections. Mutations in this gene are associated with an increased susceptibility to viral, bacterial and parasitic infections and to several autoimmune diseases.

Immunogen Information

Immunogen
Recombinant human IFN-gamma Protein

Cross-Reactivity

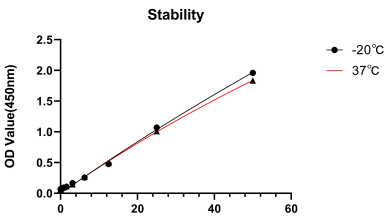
/

Assay Applications

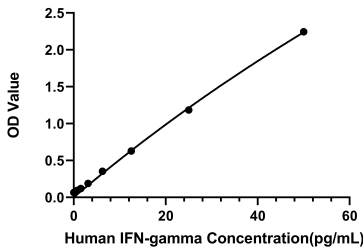
Human IFN-gamma Sandwich Immunoassay

		Recommended Concentration	Sample
ELISA	Capture	1-4 µg/mL	Rabbit anti-Human IFN-gamma mAb (Cat. No. RMK0039)
	Detection	0.125-0.5 µg/mL	Rabbit anti-Human IFN-gamma mAb (Cat. No. RMK0040)
	Standard	0.78-50 pg/mL	Recombinant Human IFN-gamma Protein

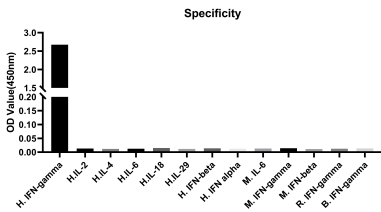
Validation Data



Placed at 37°C for 7 days, the stability of the standard curve all conform to CV <10%.



This standard curve is only for demonstration purposes. A standard curve should be generated for each assay.



No significant cross-reactivity or interference was observed.