

Rabbit anti-Human IgM mAb(CAP)

Catalog No.: RMK0103

Basic Information

Catalog No.
RMK0103

Category
Elisa Antibody Kit

Application
ELISA

Product Information

Ig Type
Rabbit IgG


Purification
Affinity purification


Endotoxin Level

Storage
Store at -20°C. Avoid freeze / thaw cycles. Preservative 0.05%ProClin 300.
Avoid repeated freeze-thaw cycles.

Formulation
Supplied as a 0.2um filtered solution in PBS with 0.05%ProClin 300,PH 7.4.

Contact

 | order@abclonal.com

 | support@abclonal.com

 | www.abclonal.com

Background

Immunogen Information

Immunogen
Native Human IgM

Cross-Reactivity

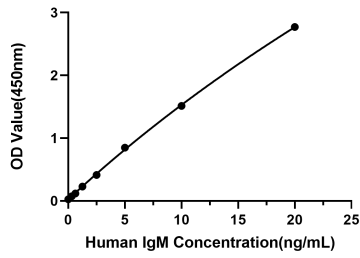
No cross-reactivity in ELISA assay with recombinant M.IgM,R.IgM,M.IgE,R.IgA

Assay Applications

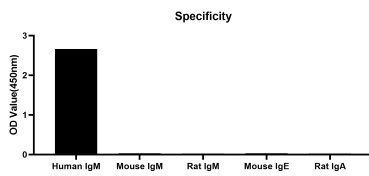
Human IgM Sandwich ELISA Immunoassay

	Recommended Concentration	Sample
ELISA Capture	1-4ug/mL	Rabbit anti-Human IgM mAb(CAP)(Cat. No.RMK0103)
ELISA Detection	0.0165-0.066ug/mL	Rabbit anti-Human IgM mAb(DET)(Cat. No.RMK0104)
Standard	0.31-20ng/mL	Recombinant Human IgM Protein

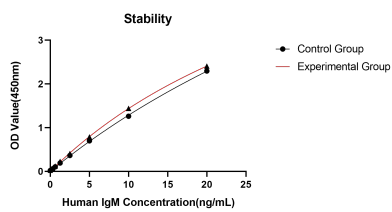
Validation Data



This standard curve is only for demonstration purposes. A standard curve should be generated for each assay.



No significant cross-reactivity or interference was observed.



Placed at 37°C for 3 days, the stability of the standard curve all conform to CV <10%.