

# Rabbit anti-Human IgM mAb(DET)

**Catalog No.:** RMK0104

## Basic Information

**Catalog No.**  
RMK0104

**Category**  
Elisa Antibody Kit

**Application**  
ELISA

## Product Information

**Ig Type**  
Rabbit IgG


**Purification**  
Affinity purification


**Endotoxin Level**


**Storage**  
Store at -20°C. Avoid freeze / thaw cycles. Preservative 0.05%ProClin 300.  
**Avoid repeated freeze-thaw cycles.**

**Formulation**  
Supplied as a 0.2um filtered solution in PBS with 0.05%ProClin 300,PH 7.4.

## Contact

 | [order@abclonal.com](mailto:order@abclonal.com)

 | [support@abclonal.com](mailto:support@abclonal.com)

 | [www.abclonal.com](http://www.abclonal.com)

## Background

## Immunogen Information

**Immunogen**  
Native Human IgM

## Cross-Reactivity

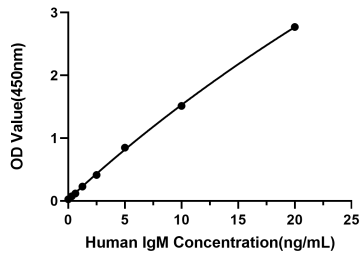
No cross-reactivity in ELISA assay with recombinant M.IgM,R.IgM,M.IgE,R.IgA

## Assay Applications

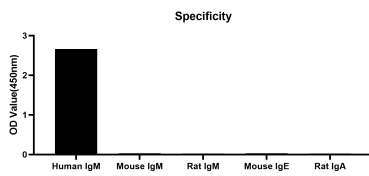
Human IgM Sandwich ELISA Immunoassay

	Recommended Concentration	Sample
ELISA Capture	1-4ug/mL	Rabbit anti-Human IgM mAb(CAP)(Cat. No.RMK0103)
ELISA Detection	0.0165-0.066ug/mL	Rabbit anti-Human IgM mAb(DET)(Cat. No.RMK0104)
Standard	0.31-20ng/mL	Recombinant Human IgM Protein

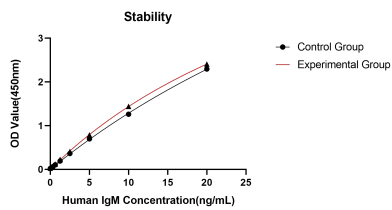
## Validation Data



This standard curve is only for demonstration purposes. A standard curve should be generated for each assay.



No significant cross-reactivity or interference was observed.



Placed at 37°C for 3 days, the stability of the standard curve all conform to CV <10%.