

# Rabbit anti-Human p-Tau181 mAb

**Catalog No.:** RMK0110

## Basic Information

**Catalog No.**  
RMK0110

**Catagory**  
Elisa Antibody Kit

**Application**  
CLIA assay □ ELISA assay

## Product Information

**Ig Type**  
Rabbit IgG


**Purification**  
Affinity purification


**Endotoxin Level**


**Storage**  
Store at -20°C. Avoid freeze / thaw cycles. Preservative □ 0.05%ProClin 300.  
**Avoid repeated freeze-thaw cycles.**

**Formulation**  
Supplied as a 0.2um filtered solution in PBS with 0.1%Braveds MB-1,PH 7.4.

## Contact

 | [order@abclonal.com](mailto:order@abclonal.com)

 | [support@abclonal.com](mailto:support@abclonal.com)

 | [www.abclonal.com](http://www.abclonal.com)

## Background

This gene encodes the microtubule-associated protein tau (MAPT) whose transcript undergoes complex, regulated alternative splicing, giving rise to several mRNA species. MAPT transcripts are differentially expressed in the nervous system, depending on stage of neuronal maturation and neuron type. MAPT gene mutations have been associated with several neurodegenerative disorders such as Alzheimer's disease, Pick's disease, frontotemporal dementia, cortico-basal degeneration and progressive supranuclear palsy.

## Immunogen Information

**Immunogen**  
Human p-Tau181 Synthetic Peptide

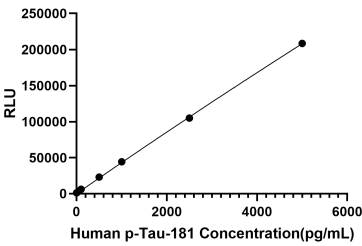
## Cross-Reactivity

## Assay Applications

Human p-Tau181 CLIA assay

	Recommended Concentration	Sample
CLIA Capture	1-4ug/mL	Rabbit anti-Human Tau mAb(Cat. No.RMK0025)
CLIA Detection	0.5-2ug/mL	Rabbit anti-Human p-Tau181 mAb(Cat. No.RMK0110)
Standard	0.05-5ng/mL	Recombinant Human p-Tau181 Protein

# Validation Data



This standard curve is only for demonstration purposes. A standard curve should be generated for each assay.