

Rabbit anti-Human CD105 mAb

Catalog No.: RMK0251

Basic Information

Catalog No.
RMK0251

Catagory
Elisa Antibody Kit

Application
multiplex assay

Product Information

Ig Type
Rabbit IgG

Purification
Affinity purification

Endotoxin Level

Storage
Store at -20°C. Avoid freeze / thaw cycles. Preservative 0.05%ProClin 300.
Avoid repeated freeze-thaw cycles.

Formulation
Supplied as a 0.2um filtered solution in PBS,PH 7.4 containing Human Endoglin/CD105 Antibody.

Contact

 | order@abclonal.com
 | support@abclonal.com
 | www.abclonal.com

Background

This gene encodes a homodimeric transmembrane protein which is a major glycoprotein of the vascular endothelium. This protein is a component of the transforming growth factor beta receptor complex and it binds to the beta1 and beta3 peptides with high affinity. Mutations in this gene cause hereditary hemorrhagic telangiectasia, also known as Osler-Rendu-Weber syndrome 1, an autosomal dominant multisystemic vascular dysplasia. This gene may also be involved in preeclampsia and several types of cancer. Alternatively spliced transcript variants encoding different isoforms have been found for this gene.

Immunogen Information

Immunogen
Recombinant Human Endoglin/CD105 Protein

Cross-Reactivity

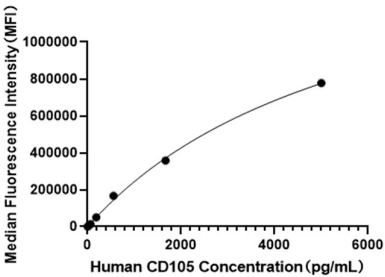
/

Assay Applications

Human Endoglin/CD105 multiplex assay

	Recommended Concentration	Sample
Multiplex Capture	3-20ug/mL	Rabbit anti-Human Endoglin/CD105 mAb(Cat. No.RMK0251)
Multiplex Detection	0.017-2ug/mL	Rabbit anti-Human Endoglin/CD105 mAb(Cat. No.RMK0252)
Standard	6.86-5000pg/mL	Recombinant Human Endoglin/CD105 Protein

Validation Data



This standard curve is only for demonstration purposes. A standard curve should be generated for each assay.