

Rabbit anti- Mouse GM-CSF mAb (CAP)

Catalog No.: RMK0304

Basic Information

Catalog No.
RMK0304

Catagory
Elisa Antibody Kit

Application
ELISA

Product Information

Ig Type
Rabbit IgG


Purification
Affinity purification


Endotoxin Level

Storage
Store at -20°C. Avoid freeze / thaw cycles. Preservative 0.05%ProClin 300.
Avoid repeated freeze-thaw cycles.

Formulation
Supplied as a 0.2um filtered solution in PBS with 0.05%ProClin 300,PH 7.4.

Contact

 | order@abclonal.com

 | support@abclonal.com

 | www.abclonal.com

Background

GM-CSF was initially characterized as a factor that can support the in vitro colony formation of granulocyte-macrophage progenitors. It is also a growth factor for erythroid, megakaryocyte, and eosinophil progenitors. GM-CSF is produced by a number of different cell types (including T cells, B cells, macrophages, mast cells, endothelial cells, fibroblasts, and adipocytes) in response to cytokine or inflammatory stimuli. On mature hematopoietic cells, GM-CSF is a survival factor for and activates the effector functions of granulocytes, monocytes/macrophages, and eosinophils. GM-CSF promotes a Th1 biased immune response, angiogenesis, allergic inflammation, and the development of autoimmunity. It shows clinical effectiveness in ameliorating chemotherapy-induced neutropenia, and GM-CSF transfected tumor cells are utilized as cancer vaccines. The 22 kDa glycosylated GM-CSF, similar to IL-3 and IL-5, is a cytokine with a core of four bundled alpha-helices. Mature mouse GM-CSF shares 49%-54% amino acid sequence identity with canine, fe...

Immunogen Information

Immunogen
Recombinant Mouse GM-CSF

Cross-Reactivity

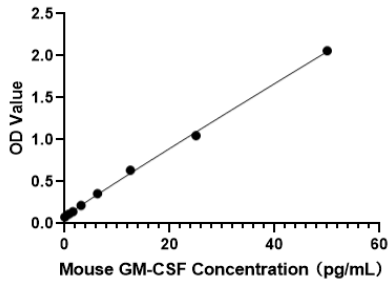
/

Assay Applications

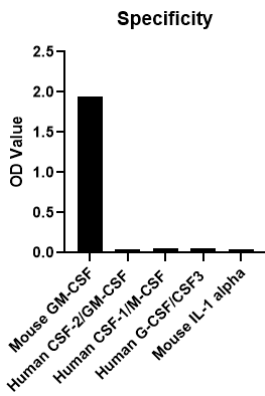
Mouse GM-CSF Sandwich ELISA Immunoassay

| | Recommended Concentration | Sample |
|-----------------|---------------------------|---|
| ELISA Capture | 1-4 ug/mL | Rabbit anti-Mouse GM-CSF (CAP)(Cat. No.RMK0304) |
| ELISA Detection | 0.1-0.4ug/mL | Rabbit anti-Mouse GM-CSF (DET)(Cat. No.RMK0305) |
| Standard | 0.78-50pg/mL | Recombinant Mouse GM-CSF Protein |

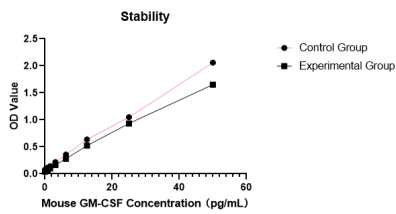
Validation Data



This standard curve is only for demonstration purposes. A standard curve should be generated for each assay.



No significant cross-reactivity or interference was observed.



Placed at 37°C for 3 days, the stability of the standard curve all conform to CV <10%.