

# Rabbit anti-Mouse GM-CSF mAb

**Catalog No.:** RMK0306

## Basic Information

**Catalog No.**  
RMK0306

**Catagory**  
Elisa Antibody Kit

**Application**  
ELISA

## Product Information

**Ig Type**  
Rabbit IgG

**Purification**  
Affinity purification

**Endotoxin Level**

**Storage**  
Store at -20°C.  
**Avoid repeated freeze-thaw cycles.**

**Formulation**  
Supplied as a 0.2um filtered solution in PBS with 0.05%ProClin 300,PH 7.4.

## Contact

 | [order@abclonal.com](mailto:order@abclonal.com)

 | [support@abclonal.com](mailto:support@abclonal.com)

 | [www.abclonal.com](http://www.abclonal.com)

## Background

GM-CSF was initially characterized as a factor that can support the in vitro colony formation of granulocyte-macrophage progenitors. It is also a growth factor for erythroid, megakaryocyte, and eosinophil progenitors. GM-CSF is produced by a number of different cell types (including T cells, B cells, macrophages, mast cells, endothelial cells, fibroblasts, and adipocytes) in response to cytokine or inflammatory stimuli. On mature hematopoietic cells, GM-CSF is a survival factor for and activates the effector functions of granulocytes, monocytes/macrophages, and eosinophils. GM-CSF promotes a Th1 biased immune response, angiogenesis, allergic inflammation, and the development of autoimmunity. It shows clinical effectiveness in ameliorating chemotherapy-induced neutropenia, and GM-CSF transfected tumor cells are utilized as cancer vaccines. The 22 kDa glycosylated GM-CSF, similar to IL-3 and IL-5, is a cytokine with a core of four bundled alpha-helices. Mature mouse GM-CSF shares 49%-54% amino acid sequence identity with canine, fe...

## Immunogen Information

**Immunogen**  
Recombinant fusion protein containing a sequence corresponding to amino acids 18-141 of mouse GM-CSF (NP\_034099.2).

## Cross-Reactivity

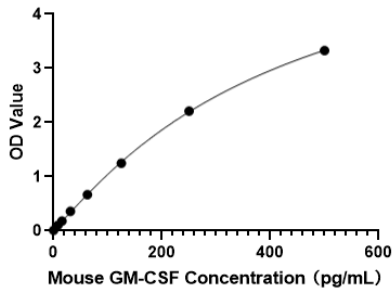
/

## Assay Applications

Mouse GM-CSF Sandwich Immunoassay

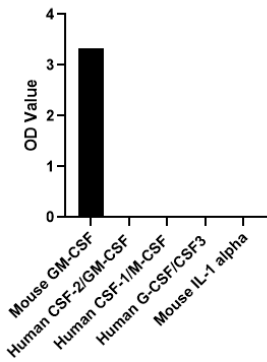
		Recommended Concentration	Sample
ELISA	Capture	1-4 ug/mL	Rabbit anti-Mouse GM-CSF mAb(Cat. No.RMK0306)
	Detection	0.001-0.004ug/mL	Rabbit anti-Mouse GM-CSF mAb(Cat. No.RMK0307)
	Standard	7.8-500pg/mL	Recombinant Mouse GM-CSF Protein

# Validation Data



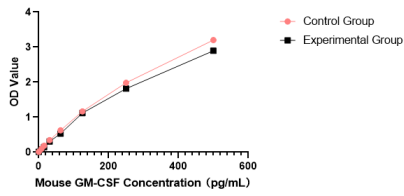
This standard curve is only for demonstration purposes. A standard curve should be generated for each assay.

## Specificity



No significant cross-reactivity or interference was observed.

## Stability



Placed at 37°C for 3 days, the stability of the standard curve all conform to CV <10%.