

Rabbit anti-Human CCL3 mAb

Catalog No.: RMK0422

Basic Information

Catalog No.
RMK0422

Catagory
Elisa Antibody Kit

Application
Multiplex

Product Information

Ig Type
Rabbit IgG

Purification
Affinity purification

Endotoxin Level

Storage
Store at -20°C.
Avoid repeated freeze-thaw cycles.

Formulation
Supplied as a 0.2µm filtered solution in PBS with 0.05% Proclin300, PH 7.4.

Contact

 | order@abclonal.com

 | support@abclonal.com

 | www.abclonal.com

Background

MIP-1 alpha (macrophage inflammatory protein 1 alpha) is a member of the CC or beta chemokine subfamily that was originally purified from the conditioned media of an LPS-stimulated murine macrophage cell line. MIP-1 alpha acts as a chemoattractant to a variety of cells including monocytes, T cells, B cells and eosinophils.

Immunogen Information

Immunogen
Recombinant Human CCL3 Protein

Cross-Reactivity

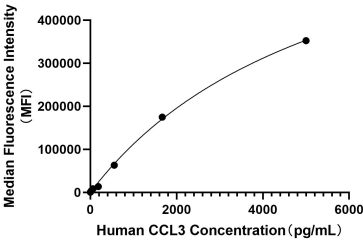
/

Assay Applications

Human CCL3 Sandwich Immunoassay

		Recommended Concentration	Sample
Multiplex	Capture	0.1-5ug/mL	Rabbit anti-Human CCL3 mAb(Cat. No. RMK0421)
	Detection	0.5-2ug/mL	Rabbit anti-Human CCL3 mAb(Cat. No. RMK0422)
	Standard	6.86-5000pg/mL	Recombinant Human CCL3/MIP-1 alpha Protein (Cat. No. RP01628)

Validation Data



This standard curve is only for demonstration purposes. A standard curve should be generated for each assay.