

# Rabbit anti-Mouse Leptin mAb

**Catalog No.: RMK0443**

## Basic Information

**Catalog No.**  
RMK0443

**Catagory**  
Elisa Antibody Kit

**Application**  
ELISA

## Product Information

**Ig Type**  
Rabbit IgG

**Purification**  
Affinity purification

**Endotoxin Level**  
N/A

**Storage**  
Store at -20°C.  
**Avoid repeated freeze-thaw cycles.**

**Formulation**  
Supplied as a 0.2 µm filtered solution in PBS with 0.05% Proclin 300, pH 7.3.

## Contact

 | order@abclonal.com

 | support@abclonal.com

 | www.abclonal.com

## Background

Enables DNA binding activity and growth factor activity. Involved in several processes, including cell surface receptor signaling pathway; positive regulation of cytokine production; and positive regulation of signal transduction. Acts upstream of or within several processes, including insulin secretion; monocarboxylic acid metabolic process; and regulation of insulin secretion. Located in cytoplasm and extracellular space. Is expressed in several structures, including adipose tissue; alimentary system; central nervous system; early conceptus; and genitourinary system. Used to study abdominal obesity-metabolic syndrome (multiple); fatty liver disease (multiple); obesity; and type 2 diabetes mellitus. Human ortholog(s) of this gene implicated in several diseases, including alcohol dependence; congenital leptin deficiency; liver disease (multiple); lung disease (multiple); and type 2 diabetes mellitus. Orthologous to human LEP (leptin).

## Immunogen Information

**Immunogen**  
Recombinant Mouse Leptin

## Cross-Reactivity

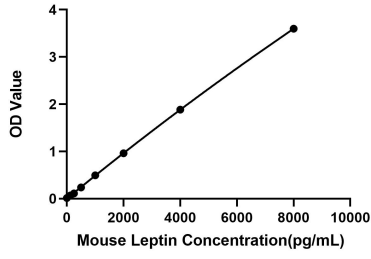
/

## Assay Applications

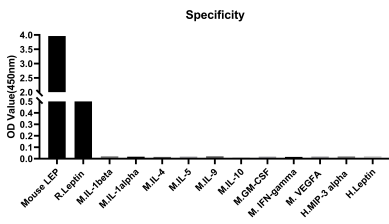
Mouse Leptin ELISA

		Recommended Concentration	Sample
ELISA	Capture	0.25-1 µg/mL	Rabbit anti-Mouse Leptin mAb (Cat. No. RMK0443)
	Detection	0.0166-0.066 µg/mL	Rabbit anti-Mouse Leptin mAb (Cat. No. RMK0444)
	Standard	125-8000 pg/mL	Recombinant Mouse Leptin Protein (Cat. No. RP02880)

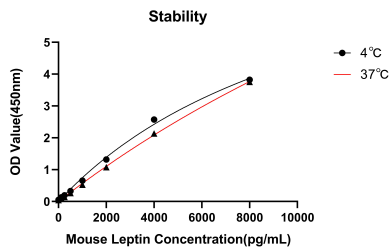
# Validation Data



This standard curve is only for demonstration purposes. A standard curve should be generated for each assay.



No significant cross-reactivity or interference was observed.



Placed at 37°C for 7 days, the stability of the standard curve all conform to CV <10%.