

Rabbit anti- Mouse Leptin mAb

Catalog No.: RMK0444

Basic Information

Catalog No.
RMK0444

Catagory
Elisa Antibody Kit

Application
ELISA

Product Information

Ig Type
Rabbit IgG

Purification
Affinity purification

Endotoxin Level

Storage
Store at -20°C.
Avoid repeated freeze-thaw cycles.

Formulation
Supplied as a 0.2um filtered solution in PBS with 0.05%ProClin 300,PH 7.4.

Contact

 | order@abclonal.com

 | support@abclonal.com

 | www.abclonal.com

Background

Enables DNA binding activity and growth factor activity. Involved in several processes, including cell surface receptor signaling pathway; positive regulation of cytokine production; and positive regulation of signal transduction. Acts upstream of or within several processes, including insulin secretion; monocarboxylic acid metabolic process; and regulation of insulin secretion. Located in cytoplasm and extracellular space. Is expressed in several structures, including adipose tissue; alimentary system; central nervous system; early conceptus; and genitourinary system. Used to study abdominal obesity-metabolic syndrome (multiple); fatty liver disease (multiple); obesity; and type 2 diabetes mellitus. Human ortholog(s) of this gene implicated in several diseases, including alcohol dependence; congenital leptin deficiency; liver disease (multiple); lung disease (multiple); and type 2 diabetes mellitus. Orthologous to human LEP (leptin).

Immunogen Information

Immunogen
Recombinant Mouse Leptin

Cross-Reactivity

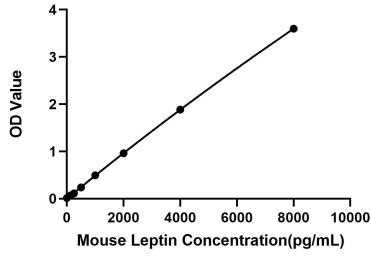
/

Assay Applications

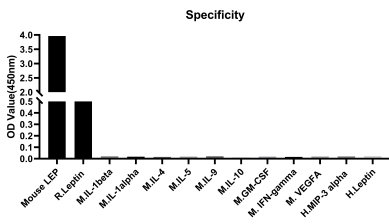
Mouse Leptin ELISA

		Recommended Concentration	Sample
ELISA	Capture	0.25-1ug/mL	Rabbit anti-Mouse Leptin mAb(Cat. No.RMK0443)
	Detection	0.0166-0.066ug/mL	Rabbit anti-Mouse Leptin mAb(Cat. No.RMK0444)
	Standard	125-8000pg/mL	Recombinant Mouse Leptin Protein(Cat. No.RP02880)

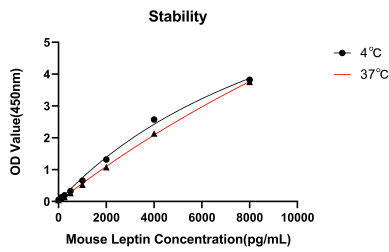
Validation Data



This standard curve is only for demonstration purposes. A standard curve should be generated for each assay.



No significant cross-reactivity or interference was observed.



Placed at 37°C for 7 days, the stability of the standard curve all conform to CV <10%.