

# Rabbit anti-Human IL-7 mAb

**Catalog No.:** RMK0459

## Basic Information

**Catalog No.**  
RMK0459

**Catagory**  
Elisa Antibody Kit

**Application**  
ELISA

## Product Information

**Ig Type**  
Rabbit IgG


**Purification**  
Affinity purification


**Endotoxin Level**

**Storage**  
Store at -20°C  
**Avoid repeated freeze-thaw cycles.**

**Formulation**  
Supplied as a 0.2um filtered solution in PBS with 0.05%ProClin 300,PH 7.4.

## Contact

 | order@abclonal.com

 | support@abclonal.com

 | www.abclonal.com

## Background

The protein encoded by this gene is a cytokine important for B and T cell development. This cytokine and the hepatocyte growth factor (HGF) form a heterodimer that functions as a pre-pro-B cell growth-stimulating factor. IL7 is found to be a cofactor for V(D)J rearrangement of the T cell receptor beta (TCRB) during early T cell development. This cytokine can be produced locally by intestinal epithelial and epithelial goblet cells, and may serve as a regulatory factor for intestinal mucosal lymphocytes. IL7 plays an essential role in lymphoid cell survival, and in the maintenance of naive and memory T cells. Alternative splicing results in multiple transcript variants encoding distinct isoforms. Additional splice variants have been described but their presence in normal tissues has not been confirmed. Severe acute respiratory syndrome coronavirus 2 (SARS-CoV-2) infection can be a potent inducer of proinflammatory cytokines and chemokines which may defend against the infection, but may also mediate destructive lung injury. Elevated seru...

## Immunogen Information

**Immunogen**  
Recombinant Human IL-7 protein

## Cross-Reactivity

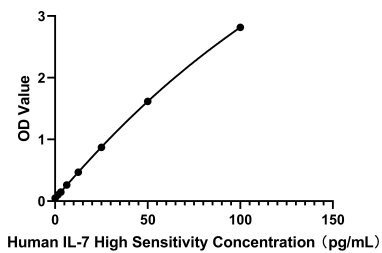
/

## Assay Applications

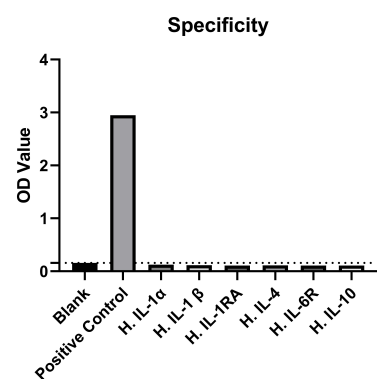
Human IL-7 ELISA assay

		Recommended Concentration	Sample
ELISA assay	Capture	2-8ug/mL	Rabbit anti-Human IL-7 mAb(Cat. No.RMK0445)
	Detection	0.0125-0.05ug/mL	Rabbit anti-Human IL-7 mAb (Cat. No. RMK0459)
	Standard	1.56-100pg/mL	Recombinant Human IL-7 Protein

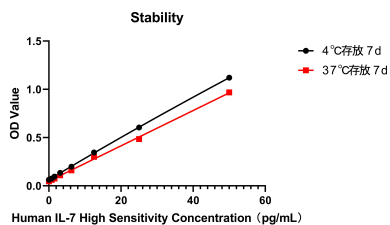
## Validation Data



This standard curve is only for demonstration purposes. A standard curve should be generated for each assay.



No significant cross-reactivity or interference was observed.



Placed at 37°C for 7 days, the stability of the standard curve all conform to CV <10%.