

# Rabbit anti-Human IL-4 mAb

Catalog No.: RMK0465

## Basic Information

**Catalog No.**  
RMK0465

**Catagory**  
Elisa Antibody Kit

**Application**  
ELISA

## Product Information

**Ig Type**  
Rabbit IgG

**Purification**  
Affinity purification

**Endotoxin Level**

**Storage**  
Store at -20°C  
**Avoid repeated freeze-thaw cycles.**

**Formulation**  
Supplied as a 0.2um filtered solution in PBS with 0.05%ProClin 300,PH 7.4.

## Contact

 | order@abclonal.com

 | support@abclonal.com

 | www.abclonal.com

## Background

The protein encoded by this gene is a pleiotropic cytokine produced by activated T cells. This cytokine is a ligand for interleukin 4 receptor. The interleukin 4 receptor also binds to IL13, which may contribute to many overlapping functions of this cytokine and IL13. STAT6, a signal transducer and activator of transcription, has been shown to play a central role in mediating the immune regulatory signal of this cytokine. This gene, IL3, IL5, IL13, and CSF2 form a cytokine gene cluster on chromosome 5q, with this gene particularly close to IL13. This gene, IL13 and IL5 are found to be regulated coordinately by several long-range regulatory elements in an over 120 kilobase range on the chromosome. IL4 is considered an important cytokine for tissue repair, counterbalancing the effects of proinflammatory type 1 cytokines, however, it also promotes allergic airway inflammation. Moreover, IL-4, a type 2 cytokine, mediates and regulates a variety of human host responses such as allergic, anti-parasitic, wound healing, and acute inflammation...

## Immunogen Information

**Immunogen**  
Recombinant Human IL-4 protein

## Cross-Reactivity

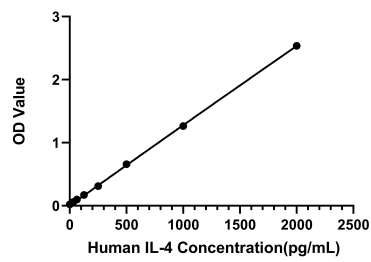
/

## Assay Applications

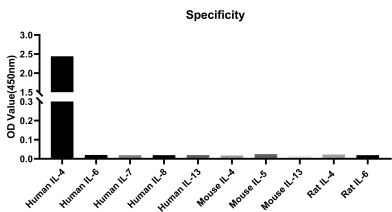
Human IL-4 ELISA

		Recommended Concentration	Sample
ELISA	Capture	1-4ug/mL	Rabbit anti-Human IL-4 mAb(Cat. No.RMK0464)
	Detection	0.01-0.04ug/mL	Rabbit anti-Human IL-4 mAb(Cat. No.RMK0465)
	Standard	31.25-2000pg/mL	Recombinant Human IL-4 Protein(Cat. No.RP00995)

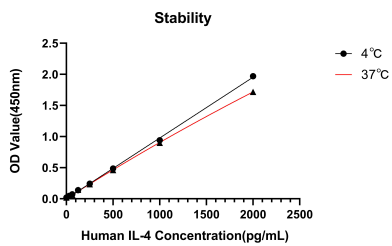
Validation Data



This standard curve is only for demonstration purposes. A standard curve should be generated for each assay.



No significant cross-reactivity or interference was observed.



Placed at 37°C for 7 days, the stability of the standard curve all conform to CV <10%.