

Rabbit anti-Human CXCL10/IP-10 mAb

Catalog No.: RMK0527

Basic Information

Catalog No.
RMK0527

Catagory
Elisa Antibody Kit

Application
ELISA, Multiplex

Product Information

Ig Type
Rabbit IgG

Purification
Affinity purification

Endotoxin Level
/

Storage
Store at -20°C.
Avoid repeated freeze-thaw cycles.

Formulation
Supplied as a 0.2µm filtered solution in PBS with 0.05% Proclin300, PH 7.4.

Contact

 | order@abclonal.com

 | support@abclonal.com

 | www.abclonal.com

Background

This antimicrobial gene encodes a chemokine of the CXC subfamily and ligand for the receptor CXCR3. Binding of this protein to CXCR3 results in pleiotropic effects, including stimulation of monocytes, natural killer and T-cell migration, and modulation of adhesion molecule expression. This gene may also be a key regulator of the 'cytokine storm' immune response to SARS-CoV-2 infection.

Immunogen Information

Immunogen
Recombinant Human CXCL10/IP-10 Protein

Cross-Reactivity

Human

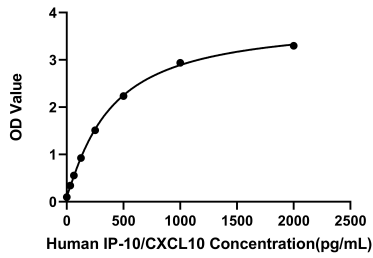
Assay Applications

Human CXCL10/IP-10 Sandwich Immunoassay

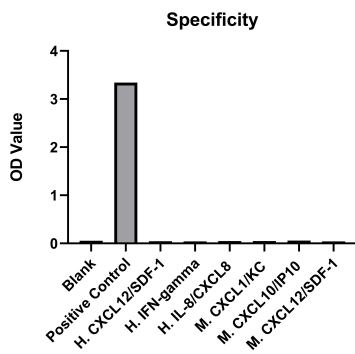
| | | Recommended Concentration | Sample |
|-------|-----------|---------------------------|--|
| ELISA | Capture | 1-4ug/mL | Rabbit anti-Human CXCL10/IP-10 mAb(Cat. No. RMK0527) |
| | Detection | 0.0125-0.05ug/mL | Rabbit anti-Human CXCL10/IP-10 mAb(Cat. No. RMK0541) |
| | Standard | 31.25-2000pg/mL | Recombinant Human CXCL10/IP-10 Protein(Cat. No. RP01638) |

| | | | |
|-----------|-----------|----------------|--|
| Multiplex | Capture | 1.2-4.8ug/mL | Rabbit anti-Human CXCL10/IP-10 mAb(Cat. No. RMK0527) |
| | Detection | 0.125-0.5ug/mL | Rabbit anti-Human CXCL10/IP-10 mAb(Cat. No. RMK0528) |
| | Standard | 6.86-5000pg/mL | Recombinant Human CXCL10/IP-10 Protein(Cat. No. RP01638) |

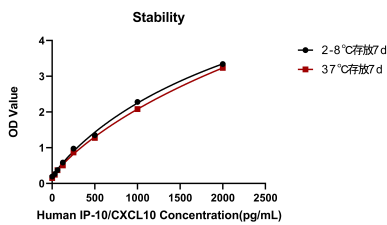
Validation Data



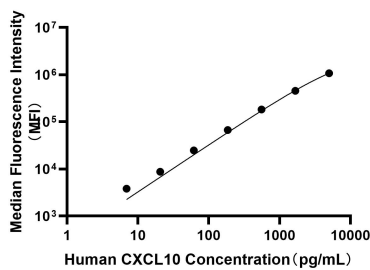
This standard curve is only for demonstration purposes. A standard curve should be generated for each assay.



No significant cross-reactivity or interference was observed.



Placed at 37°C for 7 days, the stability of the standard curve all conform to CV <10%.



This standard curve is only for demonstration purposes. A standard curve should be generated for each assay.