

# Rabbit anti-Mouse IL-2 mAb

Catalog No.: RMK0529

## Basic Information

**Catalog No.**  
RMK0529

**Catagory**  
Elisa Antibody Kit

**Application**  
ELISA,Multiplex

## Product Information

**Ig Type**  
Rabbit IgG

**Purification**  
Affinity purification

**Endotoxin Level**

**Storage**  
Store at -20°C.  
**Avoid repeated freeze-thaw cycles.**

**Formulation**  
Supplied as a 0.2µm filtered solution in PBS with 0.05% Proclin300, PH 7.4.

## Contact

 | order@abclonal.com

 | support@abclonal.com

 | www.abclonal.com

## Background

Enables cytokine activity and interleukin-2 receptor binding activity. Involved in negative regulation of T-helper 17 cell differentiation. Acts upstream of or within several processes, including extrinsic apoptotic signaling pathway in absence of ligand; positive regulation of macromolecule metabolic process; and regulation of lymphocyte activation. Located in extracellular space. Is expressed in liver; omental bursa; thymus; and thymus primordium. Used to study Sjogren's syndrome and inflammatory bowel disease. Human ortholog(s) of this gene implicated in several diseases, including Takayasu's arteritis; auditory system disease (multiple); autoimmune disease (multiple); carcinoma (multiple); and neurodegenerative disease (multiple). Orthologous to human IL2 (interleukin 2).

## Immunogen Information

**Immunogen**  
Recombinant Mouse IL-2 protein

## Cross-Reactivity

/

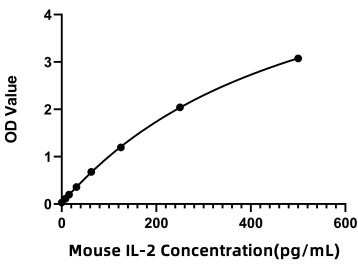
## Assay Applications

Mouse IL-2 Sandwich Immunoassay

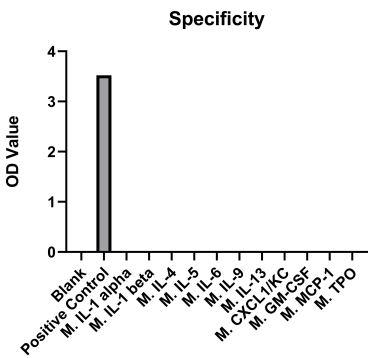
		Recommended Concentration	Sample
ELISA	Capture	1-4ug/mL	Rabbit anti-Mouse IL-2 mAb(Cat. No.RMK0542)
	Detection	0.033-0.133ug/mL	Rabbit anti-Mouse IL-2 mAb(Cat. No.RMK0529)
	Standard	7.81-500pg/mL	Recombinant Mouse IL-2 Protein(Cat. No.RP01384)

Multiplex	Capture	1.2-4.8ug/mL	Rabbit anti-Mouse IL-2 mAb(Cat. No.RMK0543)
	Detection	0.125-0.5ug/mL	Rabbit anti-Mouse IL-2 mAb(Cat. No.RMK0529)
	Standard	6.86-5000pg/mL	Recombinant Mouse IL-2 Protein(Cat. No.RP01384)

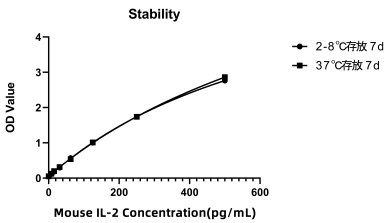
Validation Data



This standard curve is only for demonstration purposes. A standard curve should be generated for each assay.



No significant cross-reactivity or interference was observed.



Placed at 37°C for 7 days, the stability of the standard curve all conform to CV <10%.