

# Rabbit anti-Human Phospho-Tau-T217 mAb

**Catalog No.:** RMK0531

## Basic Information

**Catalog No.**  
RMK0531

**Catagory**  
Elisa Antibody Kit

**Application**  
CLIA

## Product Information

**Ig Type**  
Rabbit IgG

**Purification**  
Affinity purification

**Endotoxin Level**

**Storage**  
Store at -20°C.  
**Avoid repeated freeze-thaw cycles.**

**Formulation**  
Supplied as a 0.2µm filtered solution in PBS with 0.05% Proclin300, PH 7.4.

## Contact

 | order@abclonal.com

 | support@abclonal.com

 | www.abclonal.com

## Background

## Immunogen Information

**Immunogen**  
Recombinant Human Phospho-Tau-T217 Protein

## Cross-Reactivity

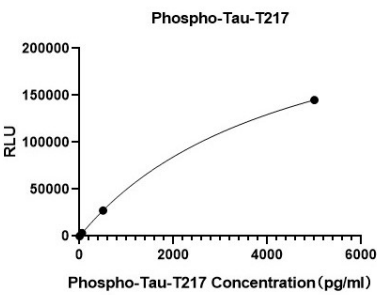
/

## Assay Applications

Human Phospho-Tau-T217 Sandwich Immunoassay

		Recommended Concentration	Sample
CLIA	Capture	1-4ug/mL	Rabbit anti-Human Phospho-Tau-T217 mAb(Cat. No.RMK0531)
	Detection	0.5-2ug/mL	Rabbit anti-Human Tau mAb(Cat. No.RMK0456)
	Standard	1-5000pg/mL	Recombinant Human Phospho-Tau-T217 Protein

# Validation Data



This standard curve is only for demonstration purposes. A standard curve should be generated for each assay.