

Rabbit anti-Mouse IL-2 mAb

Catalog No.: RMK0542

Basic Information

Catalog No.
RMK0542

Catagory
Elisa Antibody Kit

Application
ELISA

Product Information

Ig Type
Rabbit IgG

Purification
Affinity purification

Endotoxin Level

Storage
Store at -20°C.
Avoid repeated freeze-thaw cycles.

Formulation
Supplied as a 0.2µm filtered solution in PBS with 0.05% Proclin300, PH 7.4.

Contact

 | order@abclonal.com

 | support@abclonal.com

 | www.abclonal.com

Background

Enables cytokine activity and interleukin-2 receptor binding activity. Involved in negative regulation of T-helper 17 cell differentiation. Acts upstream of or within several processes, including extrinsic apoptotic signaling pathway in absence of ligand; positive regulation of macromolecule metabolic process; and regulation of lymphocyte activation. Located in extracellular space. Is expressed in liver; omental bursa; thymus; and thymus primordium. Used to study Sjogren's syndrome and inflammatory bowel disease. Human ortholog(s) of this gene implicated in several diseases, including Takayasu's arteritis; auditory system disease (multiple); autoimmune disease (multiple); carcinoma (multiple); and neurodegenerative disease (multiple). Orthologous to human IL2 (interleukin 2).

Immunogen Information

Immunogen
Recombinant Mouse IL-2 protein

Cross-Reactivity

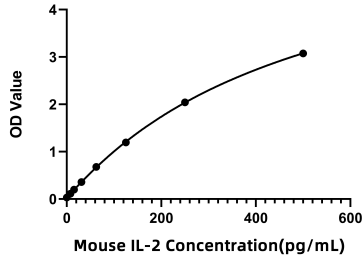
/

Assay Applications

Mouse IL-2 Sandwich Immunoassay

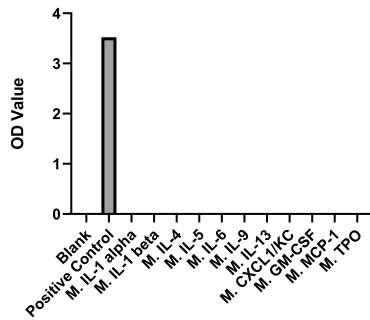
		Recommended Concentration	Sample
ELISA	Capture	1-4ug/mL	Rabbit anti-Mouse IL-2 mAb(Cat. No.RMK0542)
	Detection	0.033-0.133ug/mL	Rabbit anti-Mouse IL-2 mAb(Cat. No.RMK0529)
	Standard	7.81-500pg/mL	Recombinant Mouse IL-2 Protein(Cat. No.RP01384)

Validation Data



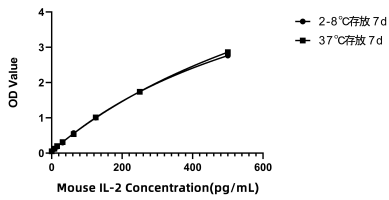
This standard curve is only for demonstration purposes. A standard curve should be generated for each assay.

Specificity



No significant cross-reactivity or interference was observed.

Stability



Placed at 37°C for 7 days, the stability of the standard curve all conform to CV <10%.