

Rabbit anti-Mouse IgG1 mAb

Catalog No.: RMK0544

Basic Information

Catalog No.
RMK0544

Category
Elisa Antibody Kit

Application
ELISA

Product Information

Ig Type
Rabbit IgG


Purification
Affinity purification


Endotoxin Level

Storage
Store at -20°C.
Avoid repeated freeze-thaw cycles.

Formulation
Supplied as a 0.2µm filtered solution in PBS with 0.05% Proclin300, PH 7.4.

Contact

 | order@abclonal.com

 | support@abclonal.com

 | www.abclonal.com

Background

Immunogen Information

Immunogen
Recombinant Mouse IgG1 protein

Cross-Reactivity

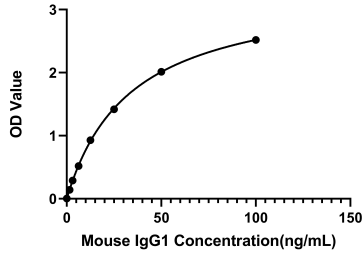
/

Assay Applications

Mouse IgG1 Sandwich Immunoassay

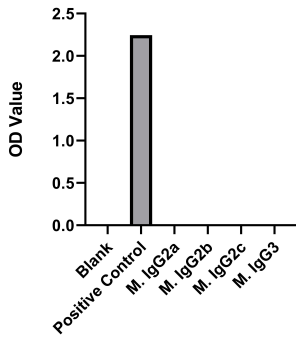
		Recommended Concentration	Sample
ELISA	Capture	0.25-1ug/mL	Rabbit anti-Mouse IgG1 mAb (Cat.No.RMK0544)
	Detection	0.005-0.02ug/mL	Rabbit anti-Mouse IgG1 mAb (Cat.No.RMK0545)
	Standard	1.53-100ng/mL	Recombinant Mouse IgG1 Protein

Validation Data



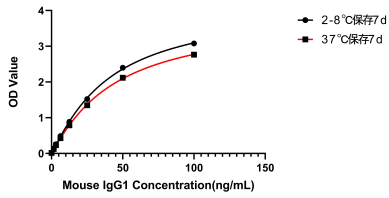
This standard curve is only for demonstration purposes. A standard curve should be generated for each assay.

Specificity



No significant cross-reactivity or interference was observed.

Stability



Placed at 37°C for 7 days, the stability of the standard curve all conform to CV <10%.