

# Rabbit anti-Mouse IgG1 mAb

**Catalog No.:** RMK0545

## Basic Information

**Catalog No.**  
RMK0545

**Category**  
Elisa Antibody Kit

**Application**  
ELISA

## Product Information

**Ig Type**  
Rabbit IgG


**Purification**  
Affinity purification


**Endotoxin Level**

**Storage**  
Store at -20°C.  
**Avoid repeated freeze-thaw cycles.**

**Formulation**  
Supplied as a 0.2µm filtered solution in PBS with 0.05% Proclin300, PH 7.4.

## Contact

 | [order@abclonal.com](mailto:order@abclonal.com)

 | [support@abclonal.com](mailto:support@abclonal.com)

 | [www.abclonal.com](http://www.abclonal.com)

## Background

## Immunogen Information

**Immunogen**  
Recombinant Mouse IgG1 protein

## Cross-Reactivity

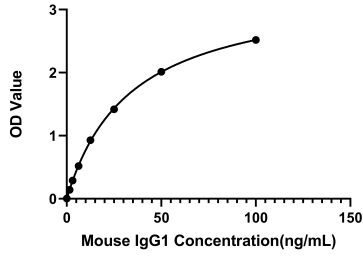
/

## Assay Applications

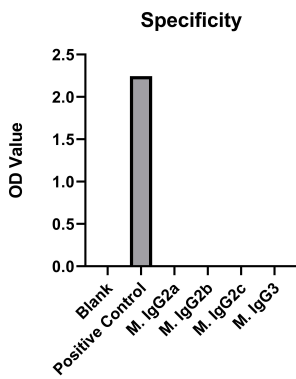
Mouse IgG1 Sandwich Immunoassay

		Recommended Concentration	Sample
ELISA	Capture	0.25-1ug/mL	Rabbit anti-Mouse IgG1 mAb (Cat.No.RMK0544)
	Detection	0.005-0.02ug/mL	Rabbit anti-Mouse IgG1 mAb (Cat.No.RMK0545)
	Standard	1.53-100ng/mL	Recombinant Mouse IgG1 Protein

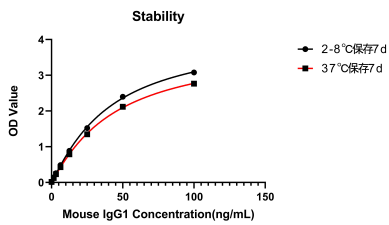
# Validation Data



This standard curve is only for demonstration purposes. A standard curve should be generated for each assay.



No significant cross-reactivity or interference was observed.



Placed at 37°C for 7 days, the stability of the standard curve all conform to CV <10%.