

Rabbit anti-Mouse IL-5 mAb

Catalog No.: RMK0568

Basic Information

Catalog No.
RMK0568

Catagory
Elisa Antibody Kit

Application
ELISA, Multiplex

Product Information

Ig Type
Rabbit IgG

Purification
Affinity purification

Endotoxin Level

Storage
Store at -20°C.
Avoid repeated freeze-thaw cycles.

Formulation
Supplied as a 0.2µm filtered solution in PBS with 0.05% Proclin300, PH 7.4.

Contact

 | order@abclonal.com

 | support@abclonal.com

 | www.abclonal.com

Background

Enables cytokine activity. Involved in interleukin-5-mediated signaling pathway; positive regulation of immunoglobulin production; and positive regulation of transcription by RNA polymerase II. Acts upstream of or within positive regulation of peptidyl-tyrosine phosphorylation. Located in extracellular space. Is expressed in colon; thymus; and thymus primordium. Human ortholog(s) of this gene implicated in asthma and stomach cancer. Orthologous to human IL5 (interleukin 5).

Immunogen Information

Immunogen
Recombinant Mouse IL-5 protein

Cross-Reactivity

/

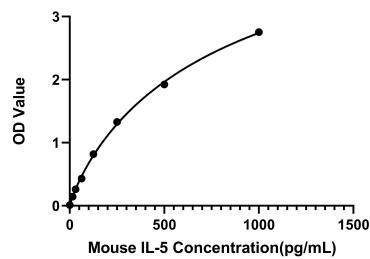
Assay Applications

Mouse IL-5 Sandwich Immunoassay

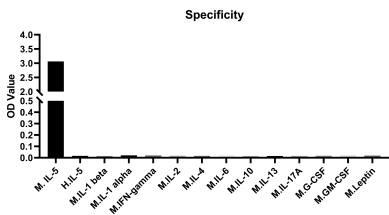
		Recommended Concentration	Sample
Multiplex	Capture	3-20 µg/mL	Rabbit anti-Mouse IL-5 mAb (Cat. No. RMK0568)
	Detection	0.017-2 µg/mL	Rabbit anti-Mouse IL-5 mAb (Cat. No. RMK0569)
	Standard	6.86-5000 pg/mL	Recombinant Mouse IL-5 Protein (Cat. No. RP01670)

ELISA	Capture	1-4 µg/mL	Rabbit anti-Mouse IL-5 mAb (Cat. No. RMK0568)
	Detection	0.005-0.02 µg/mL	Rabbit anti-Mouse IL-5 mAb (Cat. No. RMK0569)
	Standard	15.63-1000 pg/mL	Recombinant Mouse IL-5 Protein (Cat. No. RP01670)

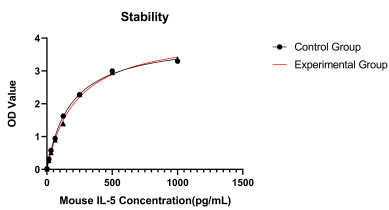
Validation Data



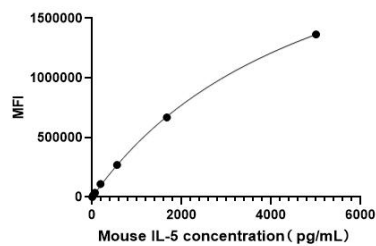
This standard curve is only for demonstration purposes. A standard curve should be generated for each assay.



No significant cross-reactivity or interference was observed.



Placed at 37°C for 7 days, the stability of the standard curve all conform to CV <10%.



This standard curve is only for demonstration purposes. A standard curve should be generated for each assay.