

Rabbit anti-Human Thyroid Stimulating Hormone mAb

Catalog No.: RMK0581

Basic Information

Catalog No.
RMK0581

Catagory
Elisa Antibody Kit

Application
ELISA

Product Information

Ig Type
Rabbit IgG


Purification
Affinity purification


Endotoxin Level

Storage
Store at -20°C.
Avoid repeated freeze-thaw cycles.

Formulation
Supplied as a 0.2 µm filtered solution in PBS with 0.05% Proclin 300, pH 7.4.

Contact

 | order@abclonal.com

 | support@abclonal.com

 | www.abclonal.com

Background

The four human glycoprotein hormones chorionic gonadotropin (CG), luteinizing hormone (LH), follicle stimulating hormone (FSH), and thyroid stimulating hormone (TSH) are dimers consisting of alpha and beta subunits that are associated noncovalently. The alpha subunits of these hormones are identical, however, their beta chains are unique and confer biological specificity. The protein encoded by this gene is the alpha subunit and belongs to the glycoprotein hormones alpha chain family. Two transcript variants encoding different isoforms have been found for this gene. The four human glycoprotein hormones chorionic gonadotropin (CG), luteinizing hormone (LH), follicle stimulating hormone (FSH), and thyroid stimulating hormone (TSH) are dimers consisting of alpha and beta subunits that are associated noncovalently. The alpha subunits of these hormones are identical, however, their beta chains are unique and confer biological specificity. Thyroid stimulating hormone functions in the control of thyroid structure and metabolism. The protein ...

Immunogen Information

Immunogen
Recombinant Human Thyroid Stimulating Hormone protein

Cross-Reactivity

Human

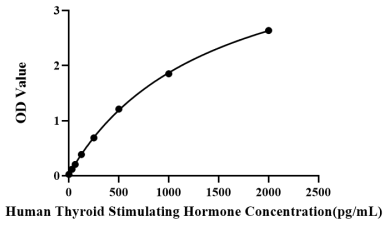
Assay Applications

Human Thyroid Stimulating Hormone Sandwich Immunoassay

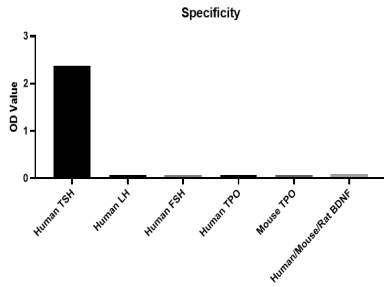
		Recommended Concentration	Sample
ELISA	Capture	1-4 µg/mL	Rabbit anti-Human Thyroid Stimulating Hormone mAb (Cat. No. RMK0580)
	Detection	0.035-0.14 µg/mL	Rabbit anti-Human Thyroid Stimulating Hormone mAb (Cat. No. RMK0581)
	Standard	31.25-2000 pg/mL	Recombinant Human Thyroid Stimulating Hormone Protein

Validation Data

This standard curve is only for demonstration purposes. A standard curve should be generated for each assay.



No significant cross-reactivity or interference was observed.



Placed at 37°C for 7 days, the stability of the standard curve all conform to CV <10%.

