

Rabbit anti-Human Thrombopoietin/Tpo mAb

Catalog No.: RMK0589

Basic Information

Catalog No.
RMK0589

Catagory
Elisa Antibody Kit

Application
ELISA

Product Information

Ig Type
Rabbit IgG

Purification
Affinity purification

Endotoxin Level
N/A

Storage
Store at -20°C.
Avoid repeated freeze-thaw cycles.

Formulation
Supplied as a 0.2 µm filtered solution in PBS with 0.05% Proclin 300, pH 7.3.

Contact

 | order@abclonal.com

 | support@abclonal.com

 | www.abclonal.com

Background

Megakaryocytopoiesis is the cellular development process that leads to platelet production. The main functional protein encoded by this gene is a humoral growth factor that is necessary for megakaryocyte proliferation and maturation, as well as for thrombopoiesis. This protein is the ligand for MLP/C_MPL, the product of myeloproliferative leukemia virus oncogene. Mutations in this gene are the cause of thrombocythemia 1. Alternative promoter usage and differential splicing result in multiple transcript variants differing in the 5' UTR and/or coding region. Multiple AUG codons upstream of the main open reading frame (ORF) have been identified, and these upstream AUGs inhibit translation of the main ORF at different extent.

Immunogen Information

Immunogen
Recombinant Human Thrombopoietin/Tpo protein

Cross-Reactivity

Human

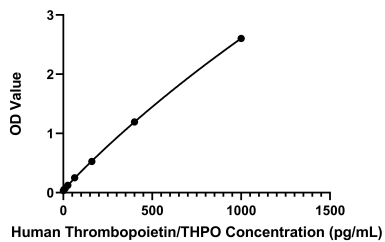
Assay Applications

Human Thrombopoietin/Tpo Sandwich Immunoassay

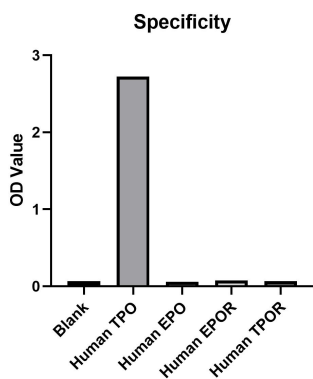
	Recommended Concentration	Sample
--	---------------------------	--------

ELISA	Capture	0.5-2 µg/mL	Rabbit anti-Human Thrombopoietin/Tpo mAb(Cat. No. RMK0588)
	Detection	0.034-0.134 µg/mL	Rabbit anti-Human Thrombopoietin/Tpo mAb(Cat. No. RMK0589)
	Standard	4.1-1000 pg/mL	Recombinant Human Thrombopoietin/Tpo Protein (Cat. No.RP00174)

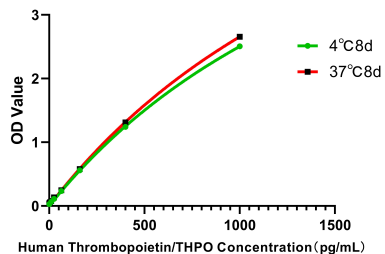
Validation Data



This standard curve is only for demonstration purposes. A standard curve should be generated for each assay.



No significant cross-reactivity or interference was observed.



Placed at 37°C for 7 days, the stability of the standard curve all conform to CV <10%.