

Rabbit anti-Human Pro-Collagen I/COL1A1 mAb

Catalog No.: RMK0616

Basic Information

Catalog No.
RMK0616

Category
Elisa Antibody Kit

Application
ELISA

Product Information

Ig Type
Rabbit IgG

Purification
Affinity purification

Endotoxin Level
N/A

Storage
Store at -20°C.
Avoid repeated freeze-thaw cycles.

Formulation
Supplied as a 0.2 µm filtered solution in PBS with 0.05% Proclin 300, pH 7.3.

Contact

 | order@abclonal.com

 | support@abclonal.com

 | www.abclonal.com

Background

This gene encodes the pro-alpha1 chains of type I collagen whose triple helix comprises two alpha1 chains and one alpha2 chain. Type I is a fibril-forming collagen found in most connective tissues and is abundant in bone, cornea, dermis and tendon. Mutations in this gene are associated with osteogenesis imperfecta types I-IV, Ehlers-Danlos syndrome type VIIA, Ehlers-Danlos syndrome Classical type, Caffey Disease and idiopathic osteoporosis. Reciprocal translocations between chromosomes 17 and 22, where this gene and the gene for platelet-derived growth factor beta are located, are associated with a particular type of skin tumor called dermatofibrosarcoma protuberans, resulting from unregulated expression of the growth factor. Two transcripts, resulting from the use of alternate polyadenylation signals, have been identified for this gene.

Immunogen Information

Immunogen
Recombinant Human Pro-Collagen I/COL1A1 protein

Cross-Reactivity

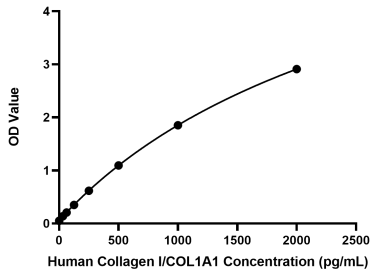
Human

Assay Applications

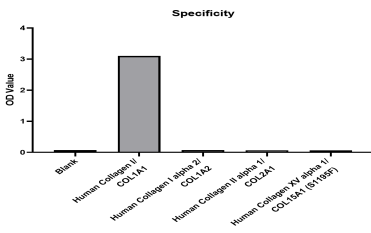
Human Pro-Collagen I/COL1A1 Sandwich Immunoassay

		Recommended Concentration	Sample
ELISA	Capture	1-4 µg/mL	Rabbit anti-Human Pro-Collagen I/COL1A1 mAb (Cat. No. RMK0616)
	Detection	0.001-0.04 µg/mL	Rabbit anti-Human Pro-Collagen I/COL1A1 mAb (Cat. No. RMK0617)
	Standard	31.25-2000 pg/mL	Recombinant Human Pro-Collagen I/COL1A1 Protein

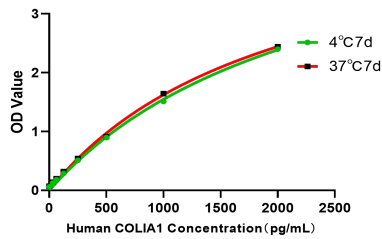
Validation Data



This standard curve is only for demonstration purposes. A standard curve should be generated for each assay.



No significant cross-reactivity or interference was observed.



Placed at 37°C for 7 days, the stability of the standard curve all conform to CV <10%.