

Catalog No.: RP00005 **Recombinant** **1 Publications**

Species	Gene ID	Swiss Prot
Human	7873	P55145

No tag

MANF:ARMET:ARP

The protein is localized in the endoplasmic reticulum (ER) and golgi, and is also secreted. Reducing expression of this protein increases susceptibility to ER stress-induced death and results in cell proliferation. Activity of this protein is important in promoting the survival of dopaminergic neurons. The presence of polymorphisms in the N-terminal arginine-rich region, including a specific mutation that changes an ATG start codon to AGG, have been reported in a variety of solid tumors; however, these polymorphisms were later shown to exist in Normal tissues and are thus no longer thought to be tumor-related.

Recombinant Human MANF Protein is produced by *E. coli* expression system. The target protein is expressed with sequence (Leu25-Leu182) of human MANF (Accession #NP_006001.4).

Storage

Store at -20°C. Store the lyophilized protein at -20°C to -80 °C up to 1 year from the date of receipt.
After reconstitution, the protein solution is stable at -20°C for 3 months, at 2-8°C for up to 1 week.
Avoid repeated freeze/thaw cycles.

Source <i>E. coli</i>	Purification ≥ 95 % as determined by SDS- PAGE.
---------------------------------	---

Calculated MW	Observed MW
18.16 kDa	18 kDa

< 0.1 EU/μg of the protein by LAL method.

Lyophilized from a 0.22 μm filtered solution of PBS, pH 7.4. Contact us for customized product form or formulation.

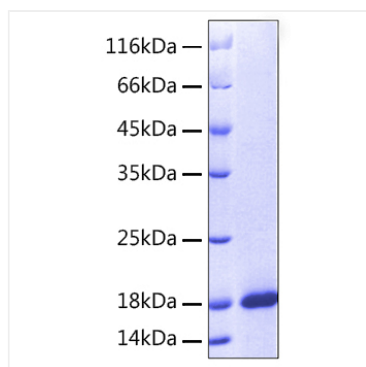
Centrifuge the vial before opening. Reconstitute to a concentration of 0.1-0.5 mg/mL in sterile distilled water. Avoid vortex or vigorously pipetting the protein. For long term storage, it is recommended to add a carrier protein or stabilizer (e.g. 0.1% BSA, 5% HSA, 10% FBS or 5% Trehalose), and aliquot the reconstituted protein solution to minimize free-thaw cycles.

 | 400-999-6126

 | cn.market@abclonal.com.cn

 | www.abclonal.com.cn

Validation Data



Recombinant Human MANF Protein was determined by SDS-PAGE under reducing conditions with Coomassie Blue.