

Recombinant Human S100-A12 Protein

Catalog No.: RP00009LQ **Recombinant**

Sequence Information

Species	Gene ID	Swiss Prot
Human	6283	P80511

Tags

C-His

Synonyms

S100A12;CAAF1;CAGC;CGRP;ENRAGE;MRP-6;MRP6;p6

Product Information

Source	Purification
<i>E. coli</i>	> 97% by SDS-PAGE.

Calculated MW	Observed MW
11.42 kDa	13 kDa

Endotoxin

< 0.1 EU/μg of the protein by LAL method.

Formulation

Supplied in PBS, 25% glycerol, pH 7.4. Contact us for customized product form or formulation.

Reconstitution

Background

The protein is a member of the S100 family of proteins containing 2 EF-hand calcium-binding motifs. S100 proteins are localized in the cytoplasm and nucleus of a wide range of cells, and involved in the regulation of a number of cellular processes such as cell cycle progression and differentiation. S100 proteins include at least 13 members which are located as a cluster on chromosome 1q21. This protein is proposed to be involved in specific calcium-dependent signal transduction pathways and its regulatory effect on cytoskeletal components may modulate various neutrophil activities. The protein includes an antimicrobial peptide which has antibacterial activity.

Basic Information

Description

Recombinant Human S100-A12 Protein is produced by *E. coli* expression system. The target protein is expressed with sequence (Met1-Glu92) of human S100A12 (Accession #NP_005612.1) fused with a 6×His tag at the C-terminus.

Bio-Activity

Measured by its binding ability in a functional ELISA. Immobilized Human S100A12 at 2 μg/mL (100 μL/well) can bind recombinant Human AGER/RAGE with a linear range of 0.1-27.25 ng/mL.

Storage

Store at -70°C. This product is stable at ≤ -70°C for up to 1 year from the date of receipt. For optimal storage, aliquot into smaller quantities after centrifugation and store at recommended temperature. Avoid repeated freeze-thaw cycles. Avoid repeated freeze/thaw cycles.

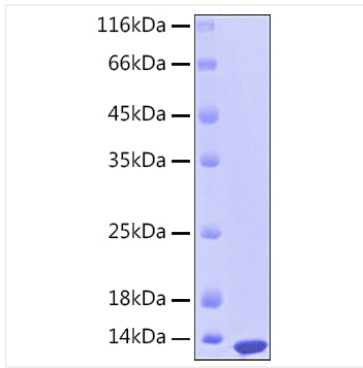
Contact

☎ | 400-999-6126

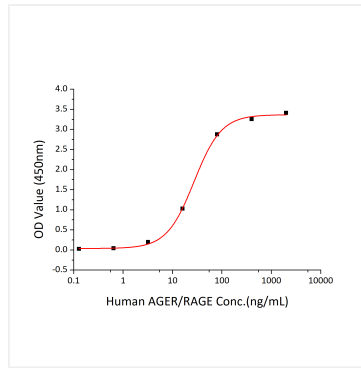
✉ | cn.market@abclonal.com.cn

🌐 | www.abclonal.com.cn

Validation Data



Recombinant Human S100-A12 Protein was determined by SDS-PAGE with Coomassie Blue, showing a band at approximately 13 kDa.



Immobilized Recombinant Human S100A12 at 2 µg/mL (100 µL/well) can bind recombinant Human AGER/RAGE with a linear range of 0.1-27.25 ng/mL.