

Recombinant Human EphA2/ECK Protein

Catalog No.: RP00024 **Recombinant**

Sequence Information

Species	Gene ID	Swiss Prot
Human	1969	P29317

Tags

No tag

Synonyms

ARCC2;CTPA;CTPP1;CTRCT6;ECK;EPHA2

Product Information

Source	Purification
Baculovirus-Infected Sf9 Cells	> 95% by SDS-PAGE.

Calculated MW	Observed MW
42.94 kDa	40-45 kDa

Endotoxin

< 1.0 EU/μg of the protein by LAL method.

Formulation

Lyophilized from a 0.22 μm filtered solution of PBS, pH 7.4. Contact us for customized product form or formulation.

Reconstitution

Centrifuge the vial before opening. Reconstitute to a concentration of 0.1-0.5 mg/mL in sterile distilled water. Avoid vortex or vigorously pipetting the protein. For long term storage, it is recommended to add a carrier protein or stabilizer (e.g. 0.1% BSA, 5% HSA, 10% FBS or 5% Trehalose), and aliquot the reconstituted protein solution to minimize free-thaw cycles.

Contact

 | 400-999-6126 | cn.market@abclonal.com.cn | www.abclonal.com.cn

Background

Eph receptor A2 (Ephrin type-A receptor 2 or EphA2) is a member of the ephrin receptor subfamily of the protein-tyrosine kinase family. The receptor tyrosine kinase which binds promiscuously membrane-bound ephrin-A family ligands residing on adjacent cells, leading to contact-dependent bidirectional signaling into neighboring cells. The signaling pathway downstream of the receptor is referred to as forward signaling while the signaling pathway downstream of the ephrin ligand is referred to as reverse signaling. Activated by the ligand ephrin-A1/EFNA1 regulates migration, integrin-mediated adhesion, proliferation and differentiation of cells. Regulates cell adhesion and differentiation through DSG1/desmoglein-1 and inhibition of the ERK1/ERK2 (MAPK3/MAPK1, respectively) signaling pathway. May also participate in UV radiation-induced apoptosis and have a ligand-independent stimulatory effect on chemotactic cell migration.

Basic Information

Description

Recombinant Human EphA2/ECK Protein is produced by insect cell-baculovirus expression system. The target protein is expressed with sequence (Asp596-Ile976) of human EphA2 (Accession #NP_004422.2).

Bio-Activity

Measured by its binding ability in a functional ELISA. Immobilized Human EphA2 at 1 μg/mL (100 μL/well) can bind Human EFNA1 with a linear range of 4.883 ng/mL-9.206 μg/mL.

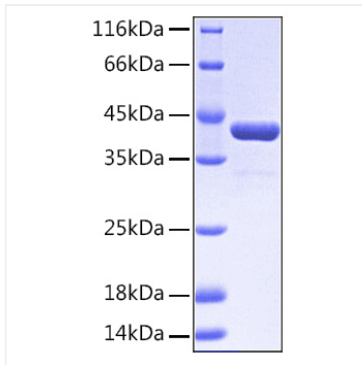
Storage

Store at -20°C. Store the lyophilized protein at -20°C to -80 °C up to 1 year from the date of receipt.

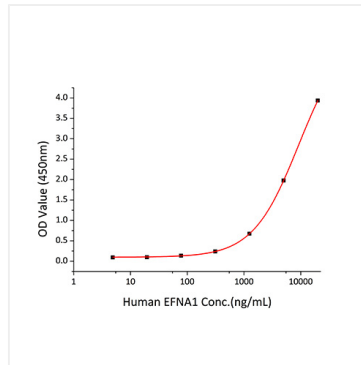
After reconstitution, the protein solution is stable at -20°C for 3 months, at 2-8°C for up to 1 week.

Avoid repeated freeze/thaw cycles.

Validation Data



Recombinant Human EphA2/ECK Protein was determined by SDS-PAGE with Coomassie Blue, showing a band at 43 kDa.



Immobilized Human EphA2 at 1 $\mu\text{g/mL}$ (100 $\mu\text{L/well}$) can bind Human EFNA1 with a linear range of 4.883 ng/mL-9.206 $\mu\text{g/mL}$.