

Recombinant Human ERK2/MAPK1 Protein

Catalog No.: RP00026LQ **Recombinant**

Sequence Information

Species	Gene ID	Swiss Prot
Human	5594	P28482

Tags

N-GST

Synonyms

ERK;ERK-2;ERK2;ERT1;MAPK2;P42MAPK;PRKM1;PRKM2;p38;p40;p41;p41mapk;p42-MAPK;MAPK1

Product Information

Source	Purification
<i>E. coli</i>	> 70% by SDS-PAGE.

Calculated MW	Observed MW
66.89 kDa	66 kDa

Endotoxin

Please contact us for more information.

Formulation

Supplied in 50mM Tris□150mM NaCl□0.1mM EDTA□0.25mM DTT□0.1mM AEBSF□25%glycerol□10mM GSH□pH 8.0.Contact us for customized product form or formulation.

Reconstitution

Background

ERK2 is a protein serine/threonine kinase, also known as extracellular signal-regulated kinases (ERKs), act as an integration point for multiple biochemical signals, and are involved in a wide variety of cellular processes such as proliferation, differentiation, transcription regulation and development. The activation of this kinase requires its phosphorylation by upstream kinases. Upon activation, this kinase translocates to the nucleus of the stimulated cells, where it phosphorylates nuclear targets. One study also suggests that this protein acts as a transcriptional repressor independent of its kinase activity. The encoded protein has been identified as a moonlighting protein based on its ability to perform mechanistically distinct functions.

Basic Information

Description

Recombinant Human ERK2/MAPK1 Protein is produced by *E. coli* expression system. The target protein is expressed with sequence (Met1-Ser360) of human MAPK1 (Accession #NP_002736.3) fused with a GST tag at the N-terminus.

Bio-Activity

1.Measured by its binding ability in a functional ELISA. Immobilized Human MAPK1 Protein at 1μg/mL (100 μL/well) can bind ERK1/2 Rabbit mAb with a linear range of 0.017-4.92 ng/mL.

Storage

Store at -70°C. This product is stable at ≤ -70°C for up to 1 year from the date of receipt. For optimal storage, aliquot into smaller quantities after centrifugation and store at recommended temperature. Avoid repeated freeze-thaw cycles. Avoid repeated freeze/thaw cycles.

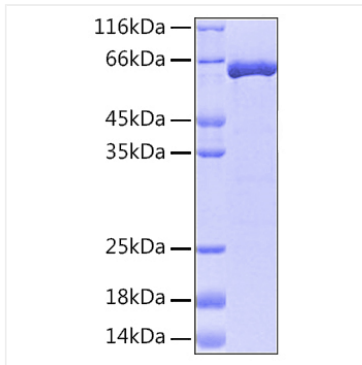
Contact

☎ | 400-999-6126

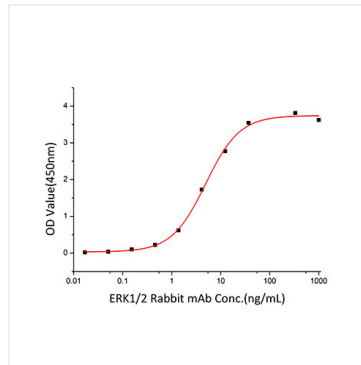
✉ | cn.market@abclonal.com.cn

🌐 | www.abclonal.com.cn

Validation Data



Recombinant Human ERK2/MAPK1 Protein was determined by SDS-PAGE with Coomassie Blue, showing a band at 66 kDa.



Immobilized Recombinant Human ERK2/MAPK1 Protein at 1 μ g/mL (100 μ L/well) can bind ERK1/2 Rabbit mAb with a linear range of 0.017-4.92 ng/mL.