

Catalog No.: RP00027 **Recombinant**

Species	Gene ID	Swiss Prot
Human	27179	O9UHA7

C-His

IL36A;FIL1;FIL1(EPSILON);FIL1E;IL-1F6;IL
1(EPSILON);IL1F6

Source	Purification
<i>E. coli</i>	≥ 95 % as determined by SDS-PAGE

Calculated MW	Observed MW
18.52 kDa	18 kDa

< 1 EU/μg of the protein by LAL method.

Lyophilized from a 0.22 µm filtered solution of PBS, pH 7.4. Contact us for customized product form or formulation.

Centrifuge the vial before opening. Reconstitute to a concentration of 0.1-0.5 mg/mL in sterile distilled water. Avoid vortex or vigorously pipetting the protein. For long term storage, it is recommended to add a carrier protein or stabilizer (e.g. 0.1% BSA, 5% HSA, 10% FBS or 5% Trehalose), and aliquot the reconstituted protein solution to minimize free-thaw cycles.

 | 400-999-6126

 | cn.market@abclonal.com.cn

 | www.abclonal.com.cn

Interleukin-1 family member 6 (IL-1F6), also known as interleukin 36, alpha (IL36A), is a pro-inflammatory cytokine which plays an important role in innate and adaptive immunity. IL-1F6 can activate NF-kappa-B and MAPK signaling pathways to generate an inflammatory response. The encoded protein functions primarily in skin and demonstrates increased expression in psoriasis. In addition, decreased expression of this protein has been linked to a poor prognosis in both hepatocellular carcinoma and colorectal cancer patients.

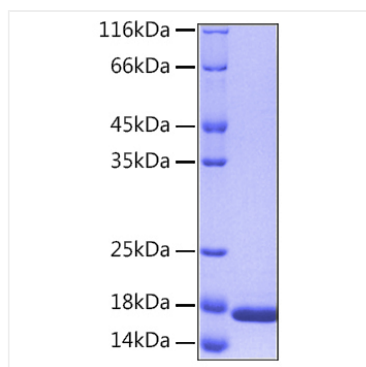
Recombinant Human IL-36 alpha/IL-1F6 Protein is produced by *E. coli* expression system. The target protein is expressed with sequence (Met1-Phe158) of human IL-36 alpha (Accession #NP_055255.1) fused with a 6xHis tag at the C-terminus.

Store at -20°C. Store the lyophilized protein at -20°C to -80 °C up to 1 year from the date of receipt.

After reconstitution, the protein solution is stable at -20°C for 3 months, at 2-8°C for up to 1 week.

Avoid repeated freeze/thaw cycles.

Validation Data



Recombinant Human IL-36 alpha/IL-1F6
Protein was determined by SDS-PAGE under
reducing conditions with Coomassie Blue.