

# Recombinant Human GMF-Beta/GMFB Protein

Catalog No.: RP00031 **Recombinant**

## Sequence Information

Species	Gene ID	Swiss Prot
Human	2764	P60983

### Tags

No tag

### Synonyms

GMFB;GMF

## Product Information

Source	Purification
<i>E. coli</i>	> 95% by SDS-PAGE.

Calculated MW	Observed MW
16.58 kDa	18-20 kDa

### Endotoxin

< 0.1 EU/μg of the protein by LAL method.

### Formulation

Lyophilized from a 0.22 μm filtered solution of PBS, pH 7.4. Contact us for customized product form or formulation.

### Reconstitution

Centrifuge the vial before opening. Reconstitute to a concentration of 0.1-0.5 mg/mL in sterile distilled water. Avoid vortex or vigorously pipetting the protein. For long term storage, it is recommended to add a carrier protein or stabilizer (e.g. 0.1% BSA, 5% HSA, 10% FBS or 5% Trehalose), and aliquot the reconstituted protein solution to minimize free-thaw cycles.

## Contact

☎ | 400-999-6126

✉ | [cn.market@abclonal.com.cn](mailto:cn.market@abclonal.com.cn)

🌐 | [www.abclonal.com.cn](http://www.abclonal.com.cn)

## Background

GMFB is a nerve growth factor which belongs to the actin-binding proteins ADF family, GMF subfamily. GMFB is involved in nervous system development, angiogenesis and immune function. It is especially crucial for the nervous system. GMFB causes brain cell differentiation, stimulates neural regeneration and inhibits tumor cell proliferation. GMFB overexpression in astrocytes results in the increase of BDNF production.

## Basic Information

### Description

Recombinant Human GMF-Beta/GMFB Protein is produced by *E. coli* expression system. The target protein is expressed with sequence (Ser2-His142) of human GMF-beta (Accession #NP\_004115.1).

### Bio-Activity

#### Storage

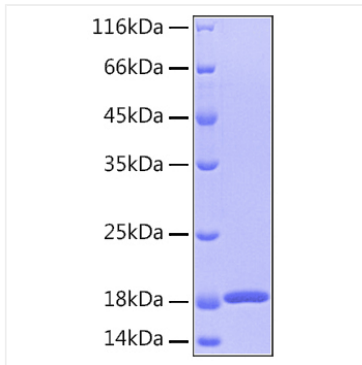
Store at -20°C. Store the lyophilized protein at -20°C to -80 °C up to 1 year from the date of receipt.

After reconstitution, the protein solution is stable at -20°C for 3 months, at 2-8°C for up to 1 week.

Avoid repeated freeze/thaw cycles.

## Validation Data

---



Recombinant Human GMF-beta Protein was determined by SDS-PAGE with Coomassie Blue, showing a band at 18 kDa.