

Recombinant Human IL-16 Protein

Catalog No.: RP00038 **Recombinant**

Sequence Information

Species	Gene ID	Swiss Prot
Human	3603	Q14005

Tags

C-His

Synonyms

IL16;LCF;NIL16;PRIL16;prIL-16

Product Information

Source	Purification
<i>E. coli</i>	> 97% by SDS-PAGE.

Endotoxin

< 0.1 EU/μg of the protein by LAL method.

Formulation

Lyophilized from a 0.22 μm filtered solution of 20mM Tris, 150mM NaCl, pH 8.0. Contact us for customized product form or formulation.

Reconstitution

Centrifuge the vial before opening. Reconstitute to a concentration of 0.1-0.5 mg/mL in sterile distilled water. Avoid vortex or vigorously pipetting the protein. For long term storage, it is recommended to add a carrier protein or stabilizer (e.g. 0.1% BSA, 5% HSA, 10% FBS or 5% Trehalose), and aliquot the reconstituted protein solution to minimize freeze-thaw cycles.

Background

The protein is a pleiotropic cytokine that functions as a chemoattractant, a modulator of T cell activation, and an inhibitor of HIV replication. The biological activities ascribed to IL-16 are reported to be dependent on the cell surface expression of CD4, suggesting that IL-16 is a CD4 ligand. Besides its chemotactic properties, IL-16 has also been shown to suppress HIV-1 replication in vitro. Recombinant *E. coli*-derived IL-16 produced at is present mostly as a monomer, exhibits chemotactic activity for lymphocytes at high concentrations, lacks chemotactic activities for monocytes, and binds the extracellular domain of CD4 with low affinity.

Basic Information

Description

Recombinant Human IL-16 Protein is produced by *E. coli* expression system. The target protein is expressed with sequence (Pro2-Ser130) of human IL-16 (Accession #NP_757366.2) fused with a 6×His tag at the C-terminus.

Bio-Activity

Measured by its binding ability in a functional ELISA. Immobilized Recombinant human IL16 at 5 μg/mL (100 μL/well) can bind Recombinant human CD4 with a linear range of 0.2-1 μg/mL.

Storage

Store the lyophilized protein at -20°C to -80 °C for long term. After reconstitution, the protein solution is stable at -20 °C for 3 months, at 2-8 °C for up to 1 week. Avoid repeated freeze/thaw cycles.

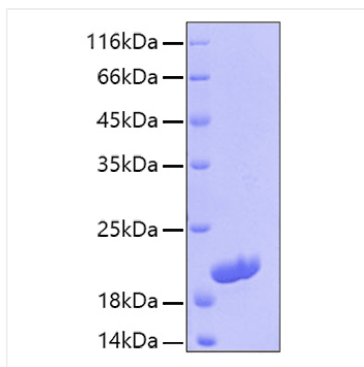
Contact

☎ | 400-999-6126

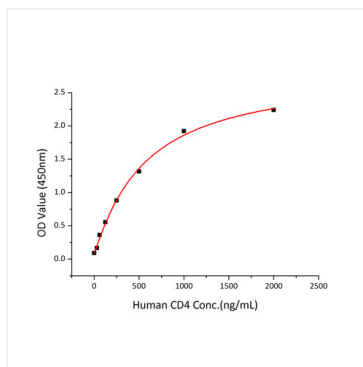
✉ | cn.market@abclonal.com.cn

🌐 | www.abclonal.com.cn

Validation Data



Recombinant Human IL-16 Protein was determined by SDS-PAGE with Coomassie Blue, showing a band at approximately 20 kDa.



Immobilized Recombinant human IL16 at 5 $\mu\text{g/mL}$ (100 μL /well) can bind Recombinant human CD4 with a linear range of 0.2-1 $\mu\text{g/mL}$.