

# Recombinant Human Apolipoprotein A-I/APOA1 Protein

Catalog No.: RP00047 **Recombinant**

## Sequence Information

Species	Gene ID	Swiss Prot
Human	335	P02647

### Tags

No tag

### Synonyms

apo(a);APOA1

## Product Information

Source	Purification
<i>E. coli</i>	> 95% by SDS-PAGE.

### Endotoxin

&lt; 1.0 EU/μg of the protein by LAL method.

### Formulation

Lyophilized from a 0.22 μm filtered solution of PBS, pH 7.4. Contact us for customized product form or formulation.

### Reconstitution

Centrifuge the vial before opening. Reconstitute to a concentration of 0.1-0.5 mg/mL in sterile distilled water. Avoid vortex or vigorously pipetting the protein. For long term storage, it is recommended to add a carrier protein or stabilizer (e.g. 0.1% BSA, 5% HSA, 10% FBS or 5% Trehalose), and aliquot the reconstituted protein solution to minimize freeze-thaw cycles.

## Contact

 | 400-999-6126 | [cn.market@abclonal.com.cn](mailto:cn.market@abclonal.com.cn) | [www.abclonal.com.cn](http://www.abclonal.com.cn)

## Background

This protein is the major protein component of high density lipoprotein (HDL) in plasma. The preproprotein is proteolytically processed to generate the mature protein, which promotes cholesterol efflux from tissues to the liver for excretion, and is a cofactor for lecithin cholesterolacyltransferase (LCAT), an enzyme responsible for the formation of most plasma cholesteryl esters.

## Basic Information

### Description

Recombinant Human Apolipoprotein A-I/APOA1 Protein is produced by *E. coli* expression system. The target protein is expressed with sequence (Asp25-Gln267) of human Apolipoprotein A-I (Accession #NP\_000030.1).

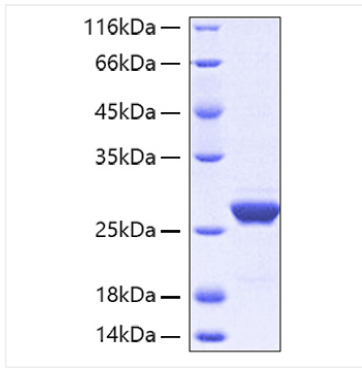
### Bio-Activity

#### Storage

Store the lyophilized protein at -20°C to -80 °C for long term. After reconstitution, the protein solution is stable at -20 °C for 3 months, at 2-8 °C for up to 1 week. Avoid repeated freeze/thaw cycles.

## Validation Data

---



Recombinant Human Apolipoprotein A-I/APOA1 Protein was determined by SDS-PAGE with Coomassie Blue, showing a band at 28 kDa.