

Recombinant Human IL-8/CXCL8/GCP-1 Protein

Catalog No.: RP00052 **Recombinant**

Sequence Information

Species	Gene ID	Swiss Prot
Human	3576	P10145

Tags

No tag

Synonyms

CXCL8;GCP-1;GCP1;IL8;LECT;LUCT;LYNA
P;MDNCF;MONAP;NAF;NAP-1;NAP1

Product Information

Source	Purification
<i>E. coli</i>	> 97% by SDS- PAGE.

Calculated MW	Observed MW
8.92 kDa	10 kDa

Endotoxin

< 1.0 EU/μg of the protein by LAL
method.

Formulation

Lyophilized from a 0.22 μm filtered
solution of PBS, pH 7.4. Contact us for
customized product form or formulation.

Reconstitution

Centrifuge the vial before opening.
Reconstitute to a concentration of
0.1-0.5 mg/mL in sterile distilled water.
Avoid vortex or vigorously pipetting the
protein. For long term storage, it is
recommended to add a carrier protein or
stabilizer (e.g. 0.1% BSA, 5% HSA, 10%
FBS or 5% Trehalose), and aliquot the
reconstituted protein solution to
minimize free-thaw cycles.

Contact

 | 400-999-6126 | cn.market@abclonal.com.cn | www.abclonal.com.cn

Background

The protein is a member of the CXC chemokine family. This chemokine is one of the major mediators of the inflammatory response. This chemokine is secreted by several cell types. It functions as a chemoattractant, and is also a potent angiogenic factor. This gene is believed to play a role in the pathogenesis of bronchiolitis, a common respiratory tract disease caused by viral infection.

Basic Information

Description

Recombinant Human IL-8/CXCL8/GCP-1 Protein is produced by *E. coli* expression system. The target protein is expressed with sequence (Ala23-Ser99) of human IL-8 (Accession #NP_000575.1).

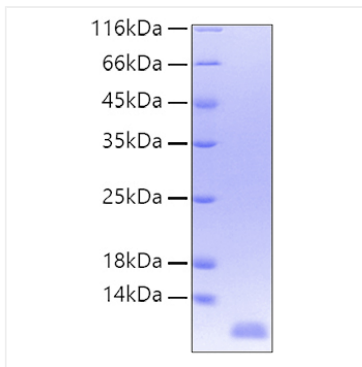
Bio-Activity

Measured by its ability to enhance Bcl2 expression in HCT116 human colon adenocarcinoma cells. 0.01-1ng/mL of Recombinant Human IL-8 can effectively enhance Bcl2 expression.

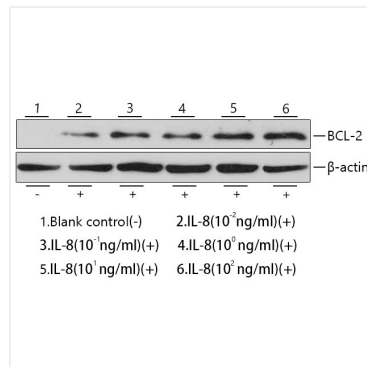
Storage

Store at -20°C. Store the lyophilized protein at -20°C to -80 °C up to 1 year from the date of receipt.
After reconstitution, the protein solution is stable at -20°C for 3 months, at 2-8°C for up to 1 week.
Avoid repeated freeze/thaw cycles.

Validation Data



Recombinant Human IL-8/CXCL8/GCP-1
Protein was determined by SDS-PAGE with
Coomassie Blue, showing a band at 10 kDa.



Recombinant Human IL-8 enhances Bcl2
expression in HCT116 human colon
adenocarcinoma cells. 0.01-1ng/mL of
Recombinant Human IL-8 can effectively
enhance Bcl2 expression.