

Recombinant Human ISG15 Protein

Catalog No.: RP00061 **Recombinant**

Sequence Information

Species	Gene ID	Swiss Prot
Human	9636	P05161

Tags

No tag

Synonyms

G1P2; IFI15; IMD38; IP17; UCRP;
hUCRP;ISG15;IFI15;IMD38;IP17;UCRP;hU
CRP

Product Information

Source	Purification
<i>E. coli</i>	> 97% by SDS- PAGE.

Endotoxin

< 1.0 EU/μg of the protein by LAL
method.

Formulation

Lyophilized from a 0.22 μm filtered
solution of 50mM HEPES, 100mM NaCl,
pH 7.5. Contact us for customized
product form or formulation.

Reconstitution

Centrifuge the vial before opening.
Reconstitute to a concentration of
0.1-0.5 mg/mL in sterile distilled water.
Avoid vortex or vigorously pipetting the
protein. For long term storage, it is
recommended to add a carrier protein or
stabilizer (e.g. 0.1% BSA, 5% HSA, 10%
FBS or 5% Trehalose), and aliquot the
reconstituted protein solution to
minimize free-thaw cycles.

Contact

 | 400-999-6126

 | cn.market@abclonal.com.cn

 | www.abclonal.com.cn

Background

The protein is a ubiquitin-like protein that is conjugated to intracellular target proteins upon activation by interferon-alpha and interferon-beta. Several functions have been ascribed to the encoded protein, including chemotactic activity towards neutrophils, direction of ligated target proteins to intermediate filaments, cell-to-cell signaling, and antiviral activity during viral infections. While conjugates of this protein have been found to be noncovalently attached to intermediate filaments, this protein is sometimes secreted.

Basic Information

Description

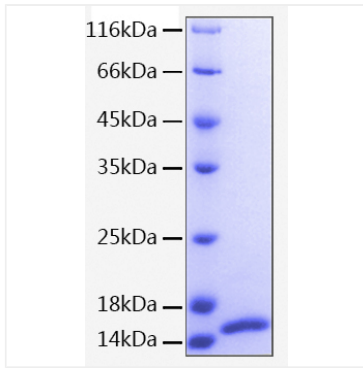
Recombinant Human ISG15 Protein is produced by *E. coli* expression system. The target protein is expressed with sequence (Gly2-Gly157) of human ISG15 (Accession #NP_005092.1).

Bio-Activity

Storage

Store the lyophilized protein at -20°C to -80 °C for long term.
After reconstitution, the protein solution is stable at -20 °C for 3 months, at 2-8 °C for up to 1 week.
Avoid repeated freeze/thaw cycles.

Validation Data



Recombinant Human ISG15 Protein was determined by SDS-PAGE with Coomassie Blue, showing a band at 16 kDa.